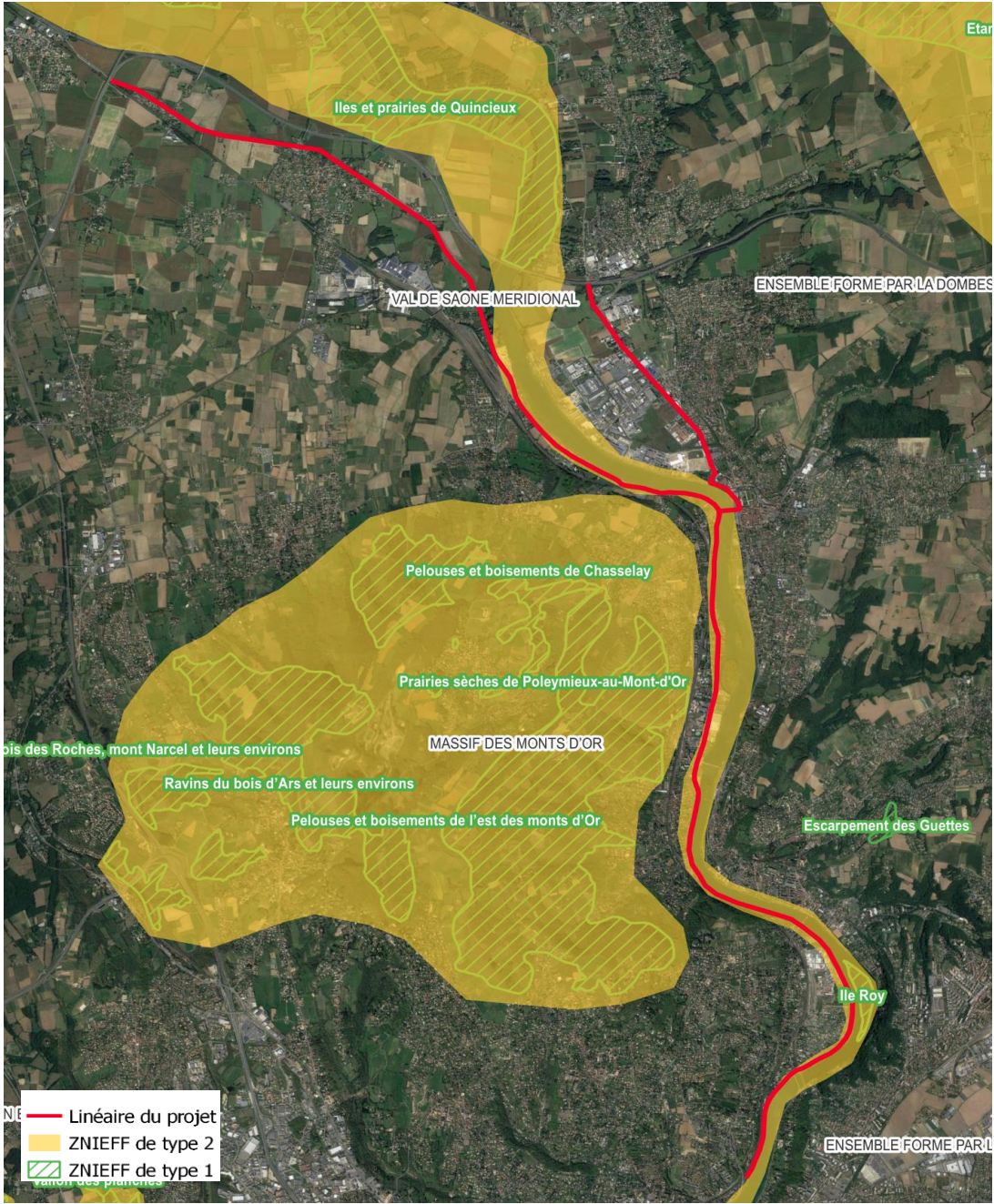


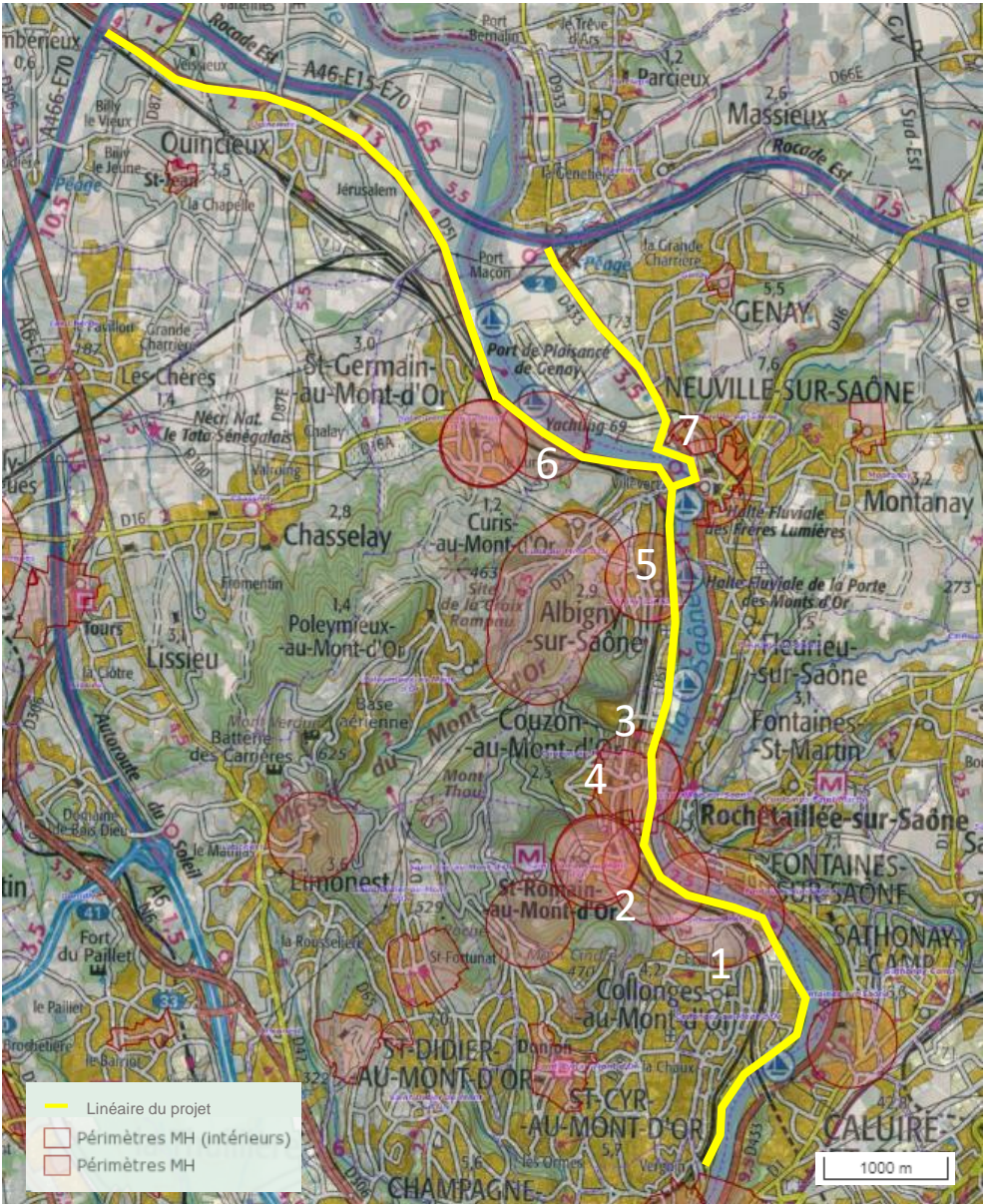
ZNIEFF :



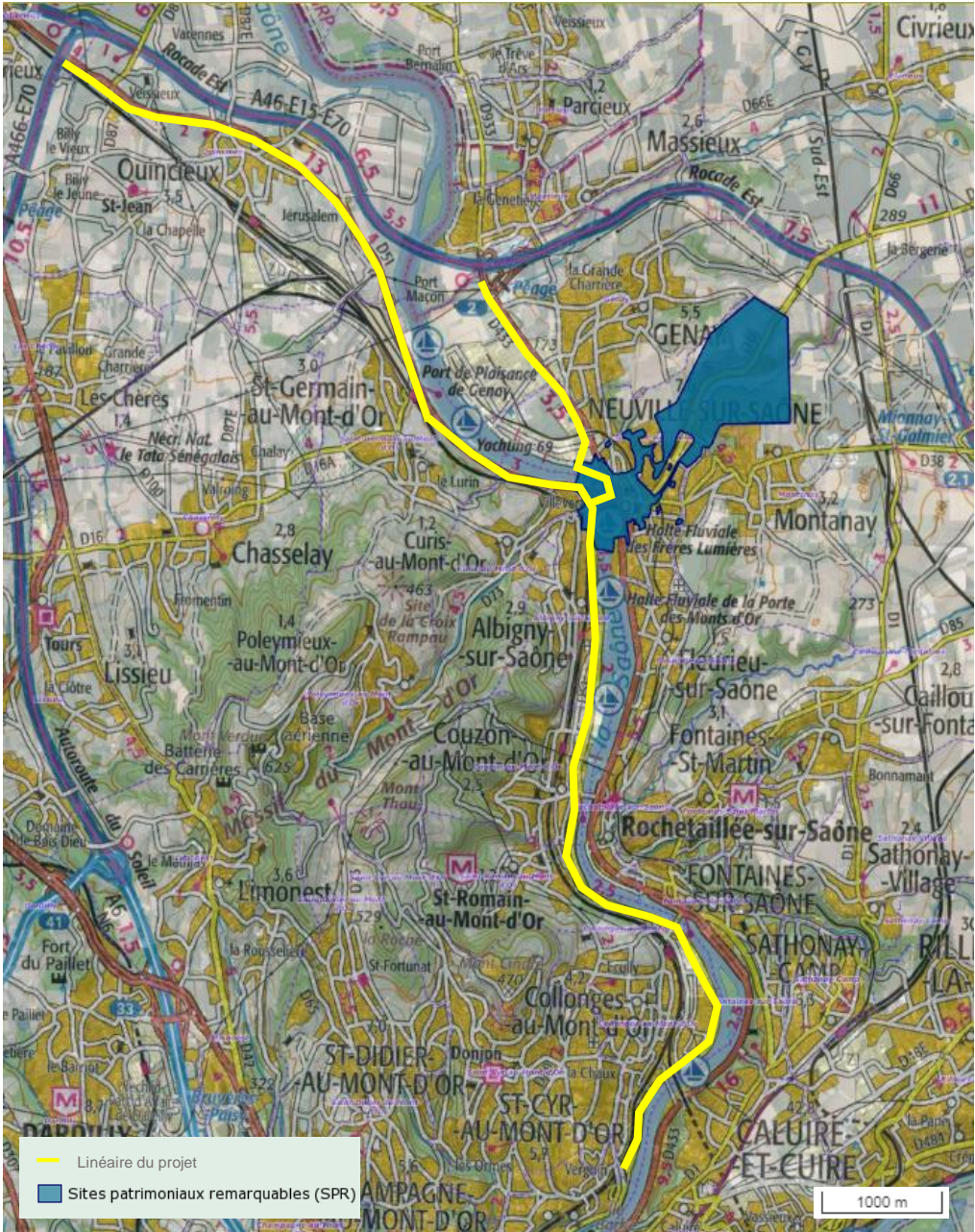


Protection au titre des abords des monuments historiques :

1 : Jardin la Folie Guillaud, 2 : Le domaine de la Fréta, 3 : Eglise Saint-Maurice, 4 : Château de la Guerrière, 5 : Château, 6 : Villa Bissuel (St-Germain) , 7 : Château d'Ombreval (Neuville-sur-Saône).

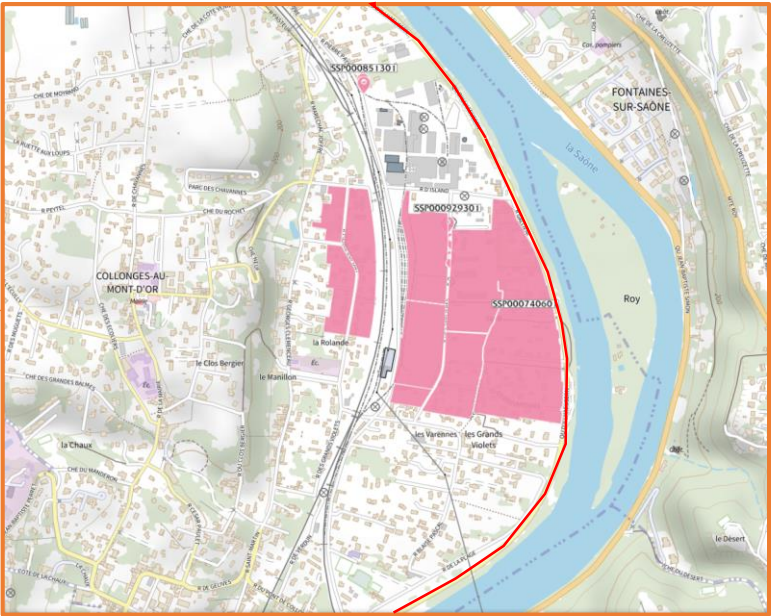
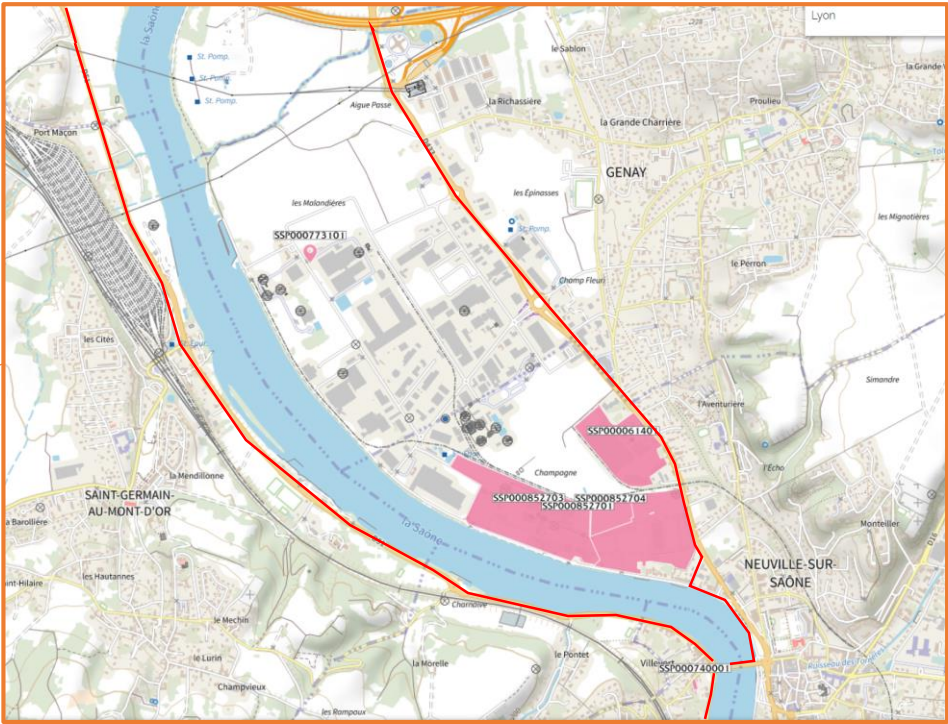
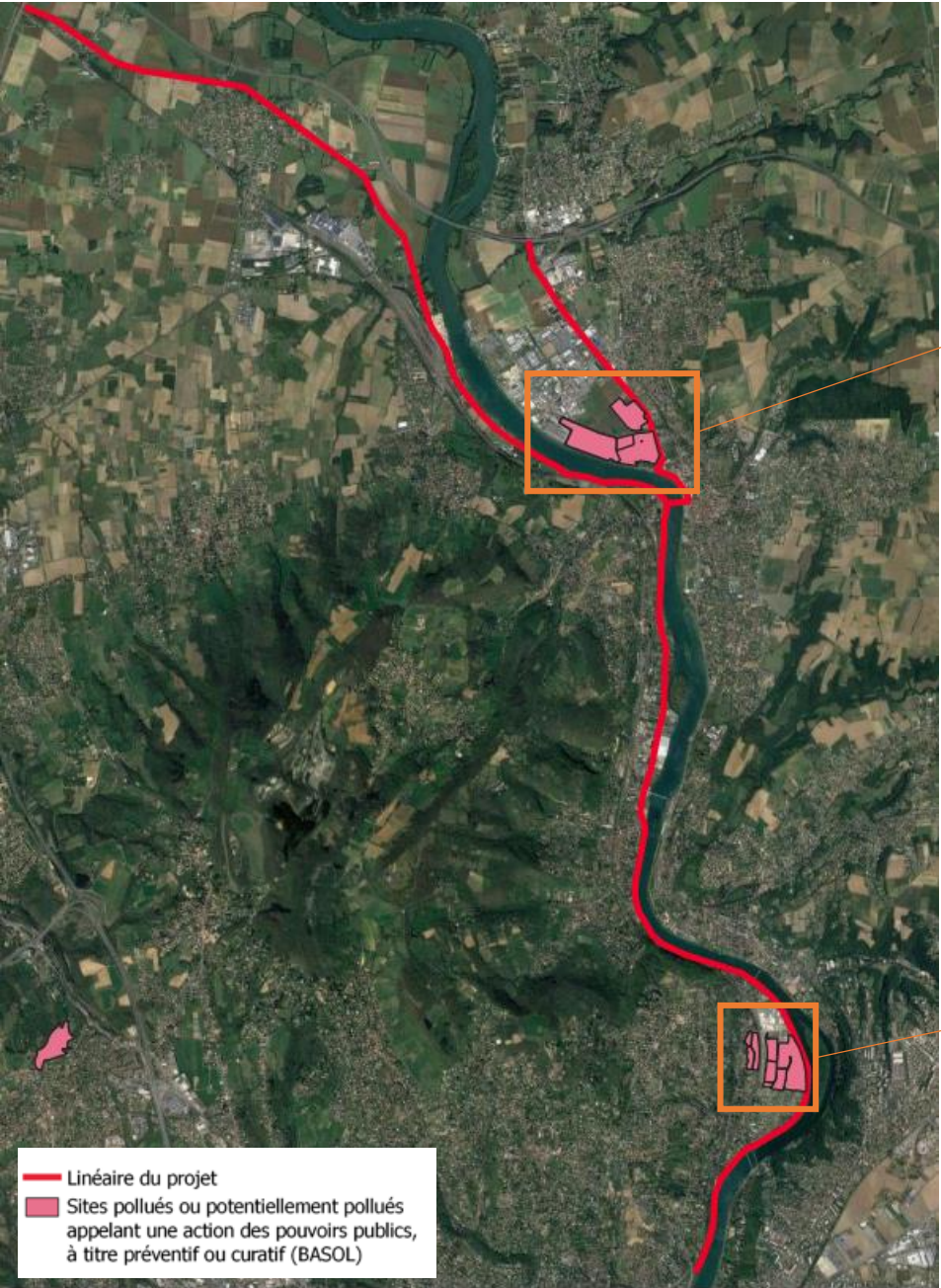


Site patrimonial remarquable :



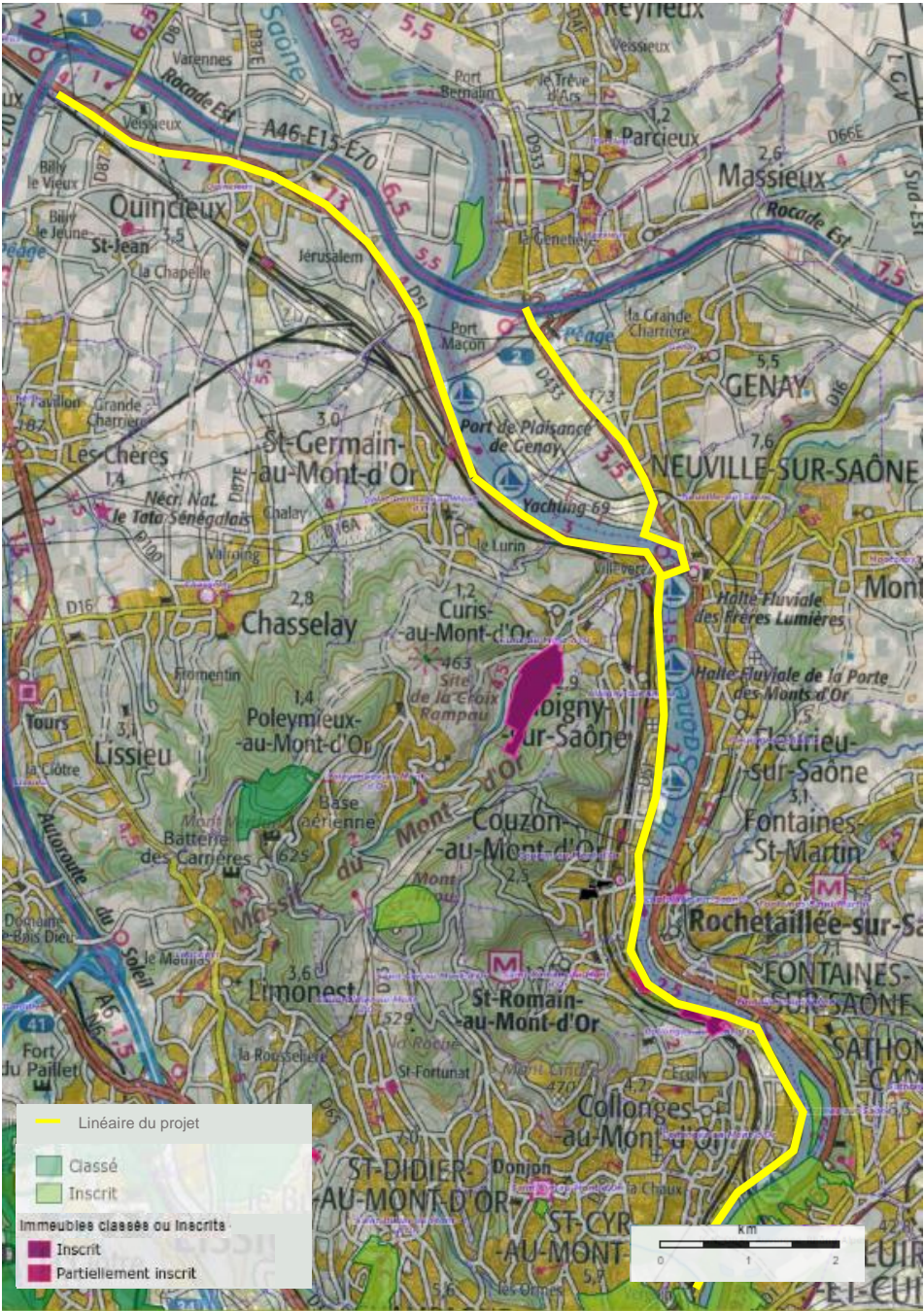


Sites et sols pollués :





Sites inscrits et classés :

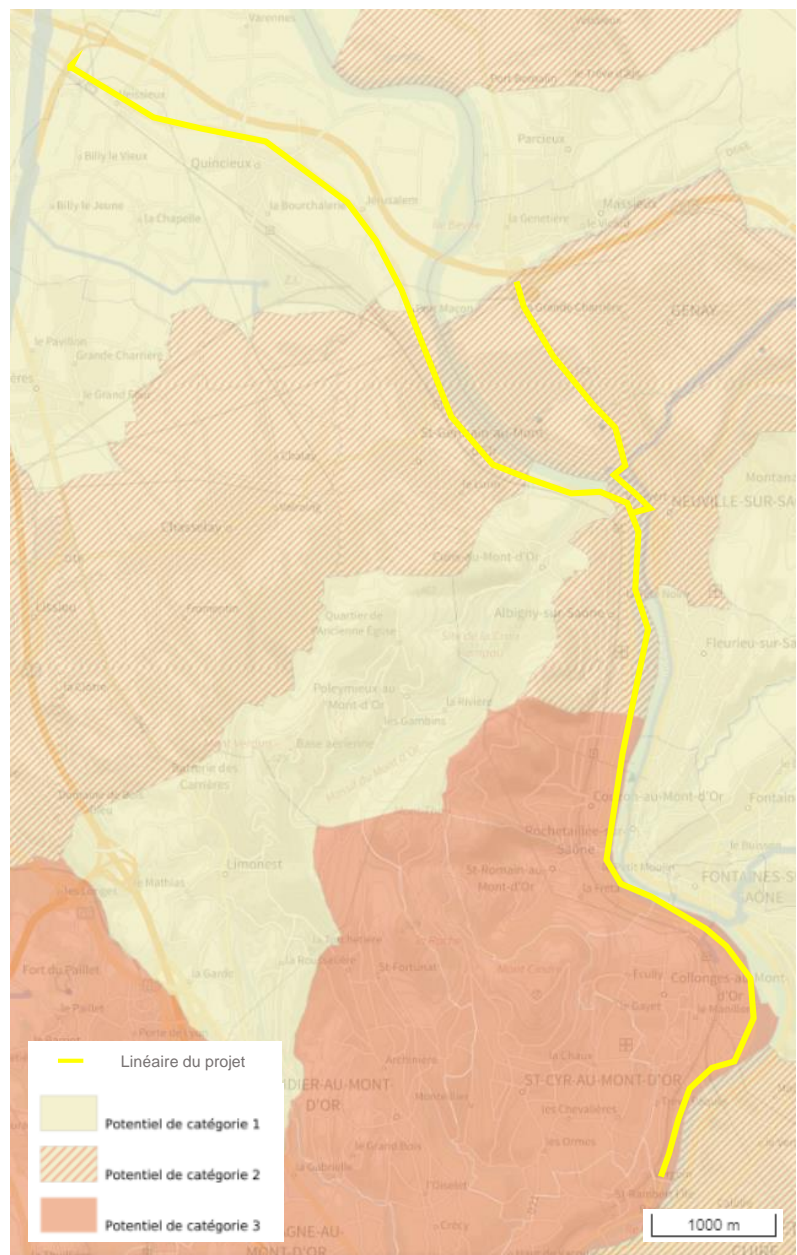


Zones de présomption de prescription archéologique

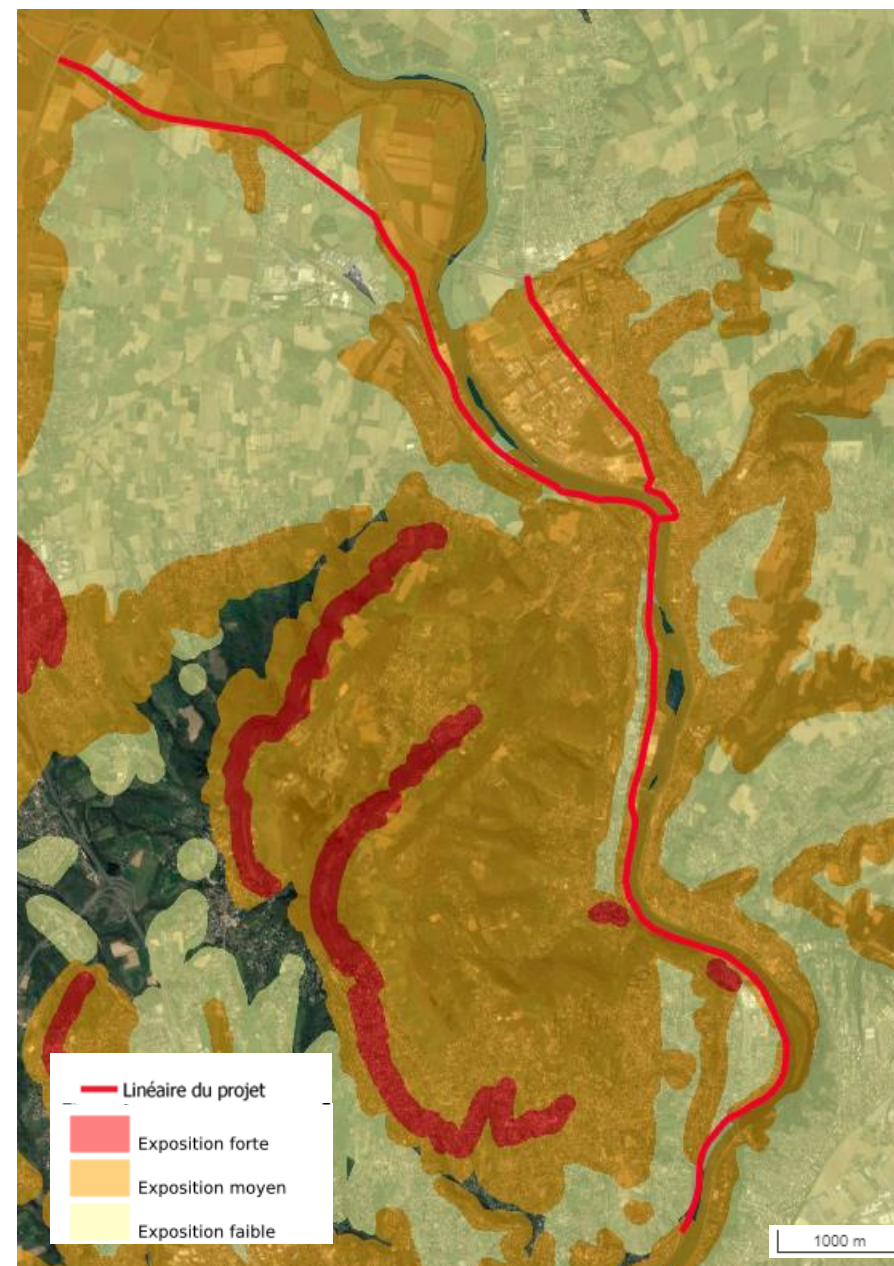




## Exposition au radon



## Exposition au retrait-gonflement des argiles





# Mouvement de terrain

