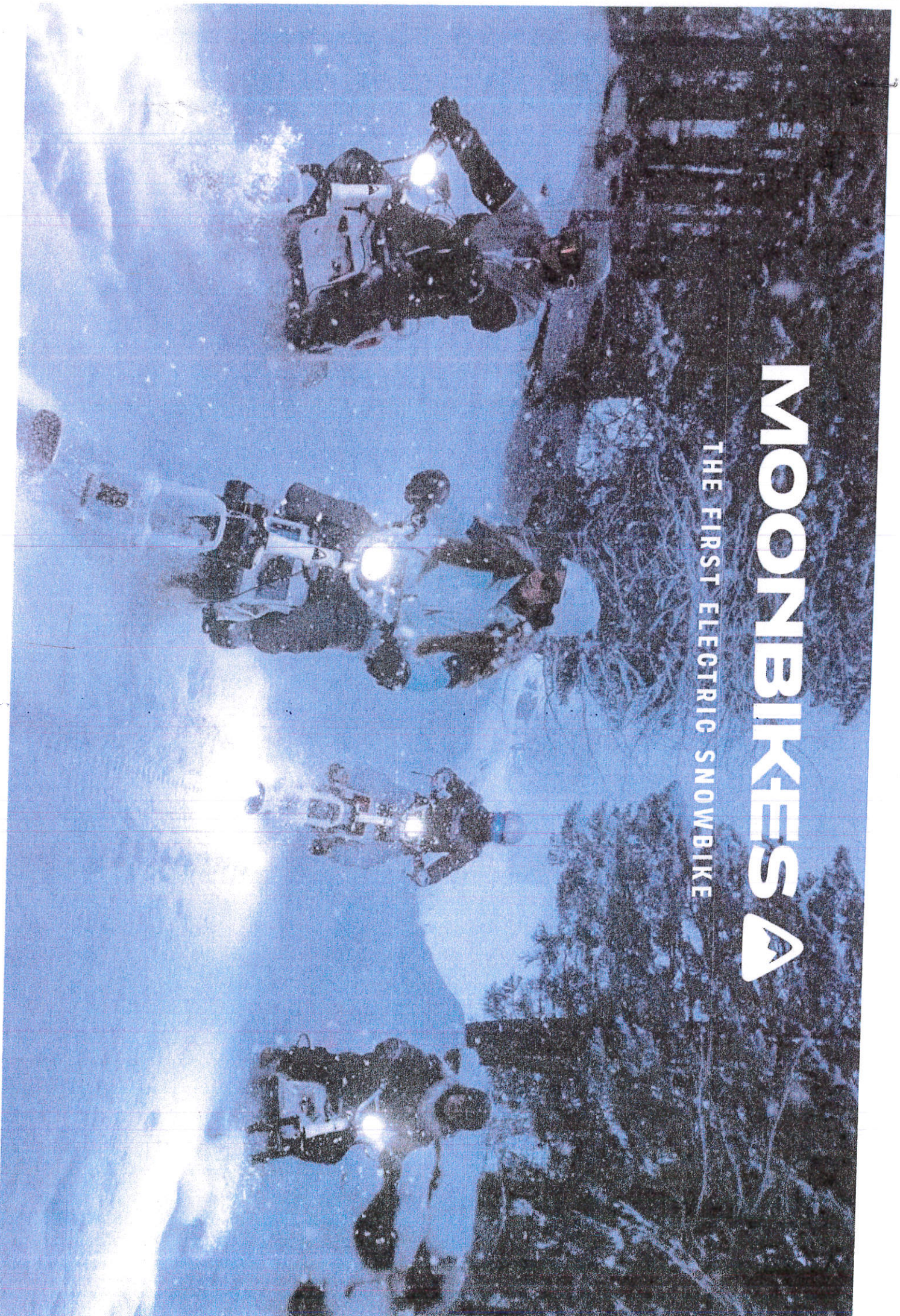


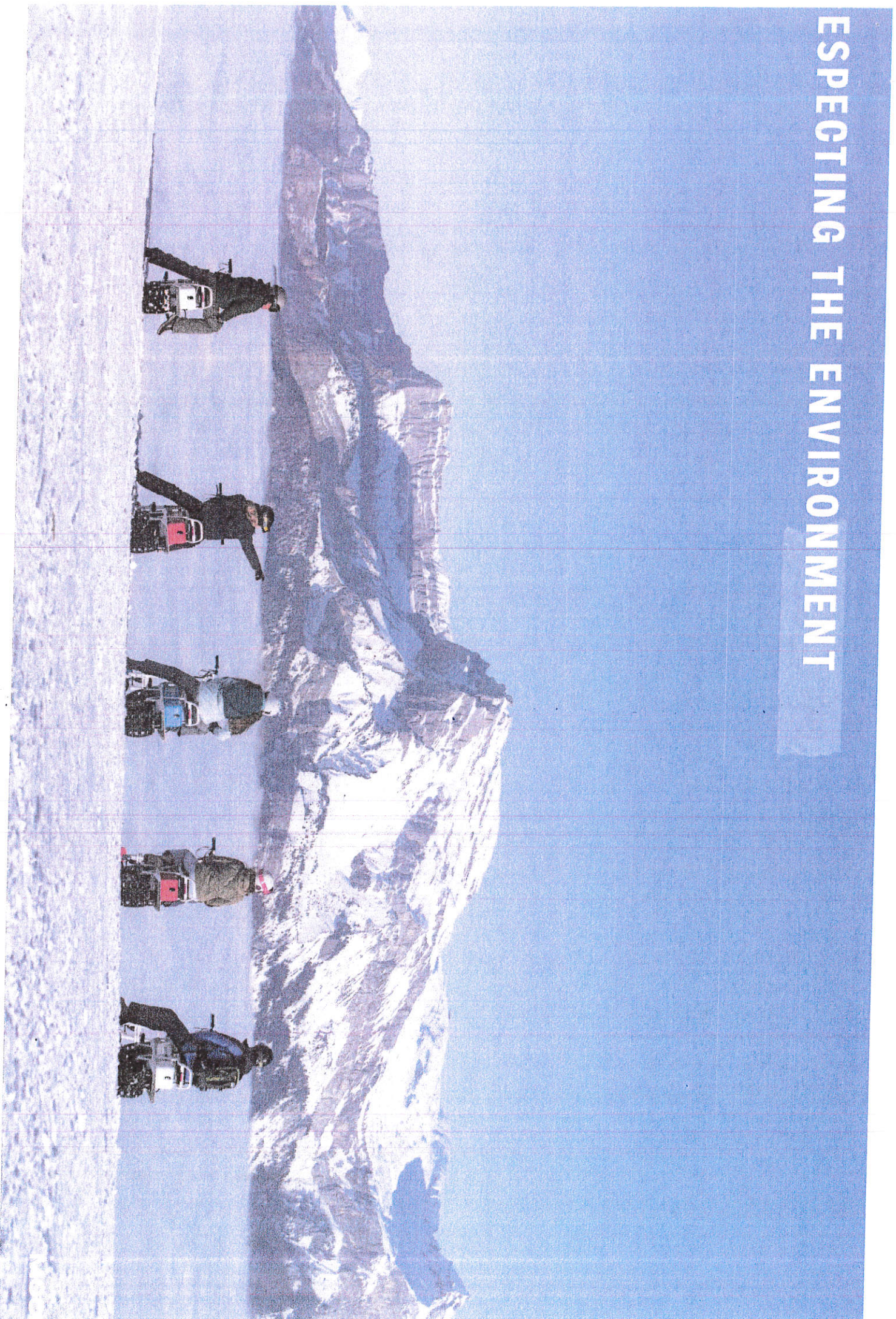
# MOONBIKES

THE FIRST ELECTRIC SNOWBIKE





# ESPECTING THE ENVIRONMENT



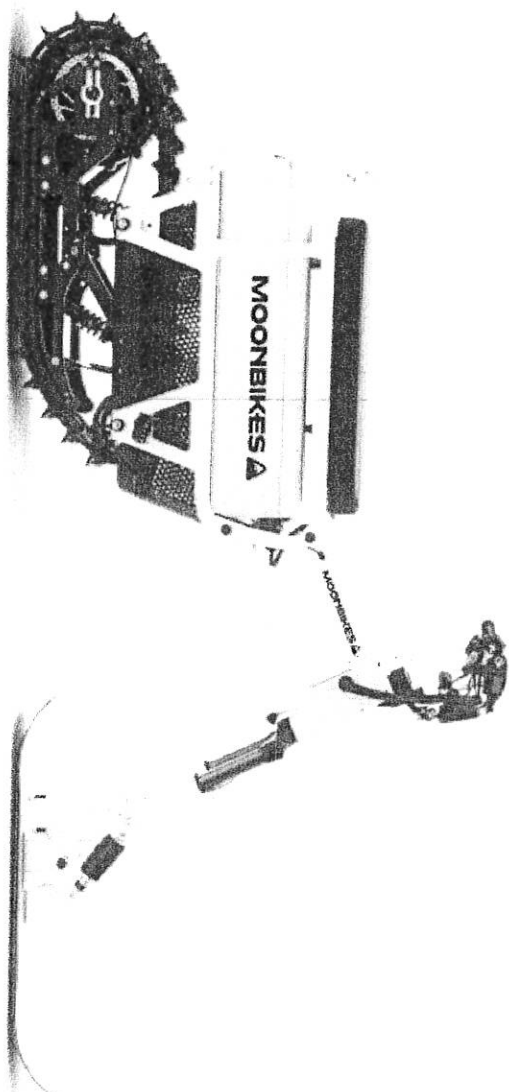


# SIGNED FOR PERFORMANCE

 Autonomy : up top 3 hours

 Top speed : 42 KM/H | 26 MPH

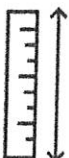
 gradeability on groomed slopes : 22° | 40%



-25°C | -13°F



87 KG | 155 LBS



224,8 CM | (88,5 INCHES)



125 LB.FT



30 CM | 12 INCHES

3

old resistance with heated  
try box, preheating if stored  
outside

Weight with 1 standard battery

Total width : 70,5 cm (28 inches)  
Track width : 25,4 cm (10 inches)

Immediate torque

Ridable powder snow depth

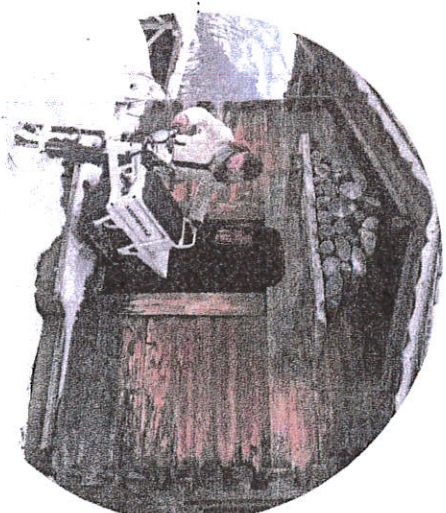
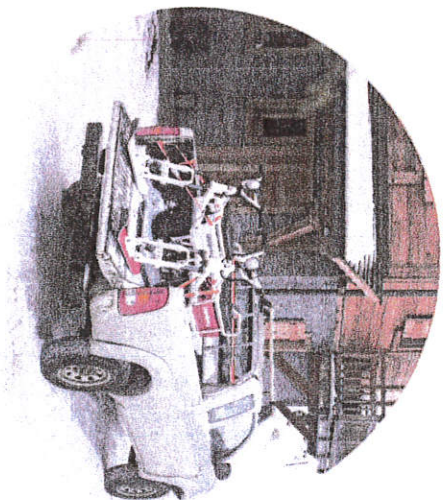
Nomin

# R EASIER LOGISTICS

## EXTRA LIGHT

*2x lighter than a classic snowmobile*

87 kg



**FITS EASILY IN YOUR CAR  
BOOT...**

**...OR IN YOUR GARAGE**

# AMPLIFIED MAINTENANCE

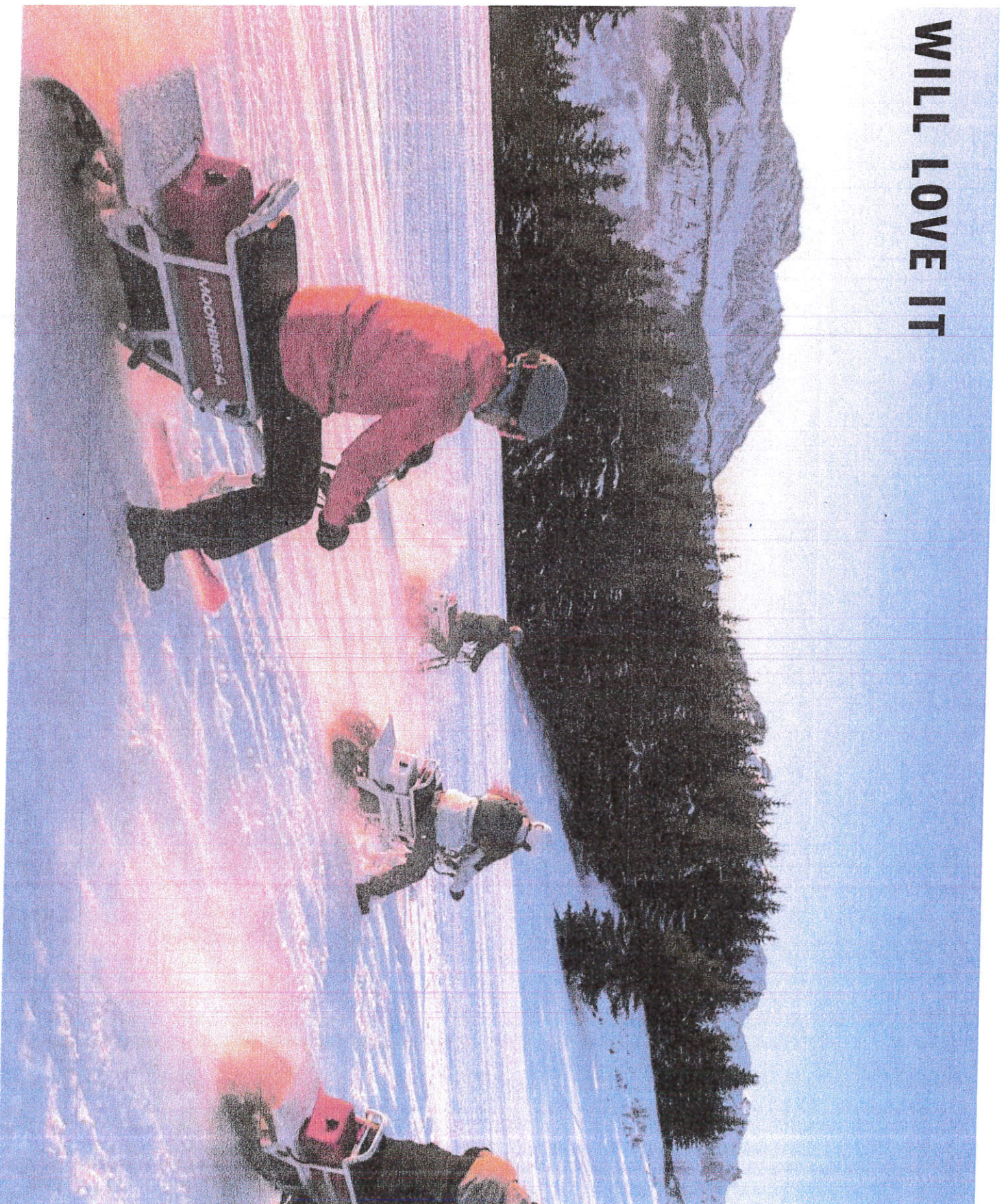




**OUR CLIENTS WILL LOVE IT**



**/10 customer  
satisfaction  
rating**





# 'S EASY AND ADDITIVE



A moonbike is well easy to handle



It only takes a few minutes to get familiar with a moonbike to enjoy an immersive and unique snow adventure.

**MOONE**

# ENGH ALPES REFERENCES

*appy & prestigious partners who already chose moonbikes  
relop their business*

