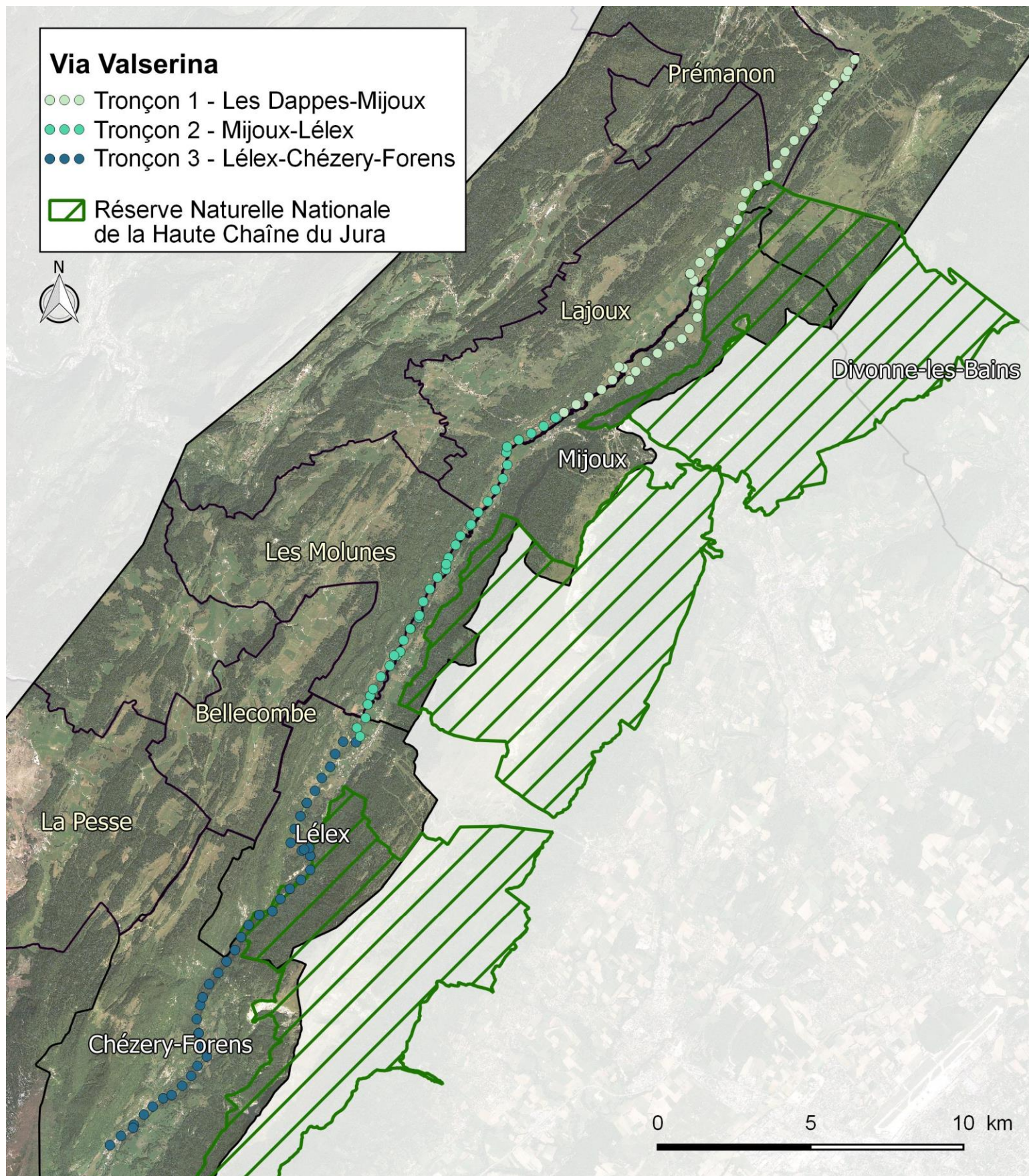


Via Valserina

Annexe au CERFA Cas par cas



- 1. Carte de situation** p.2
- 2. Intention d'aménagement** p.3
- 3. Détail du tracé par demi-tronçon** p.4
- 4. Localisation des sites Natura 2000** p.17



2. Intentions d'aménagement

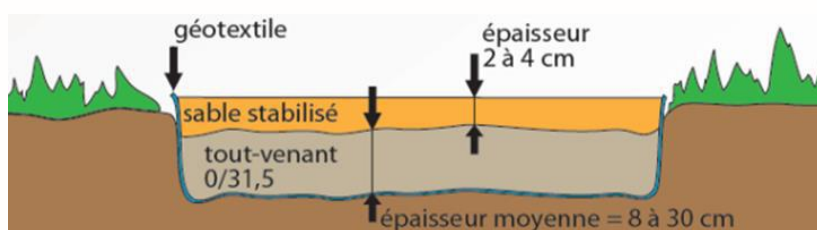
Exemple de la Via Vercors



Exemple de la Via Vercors

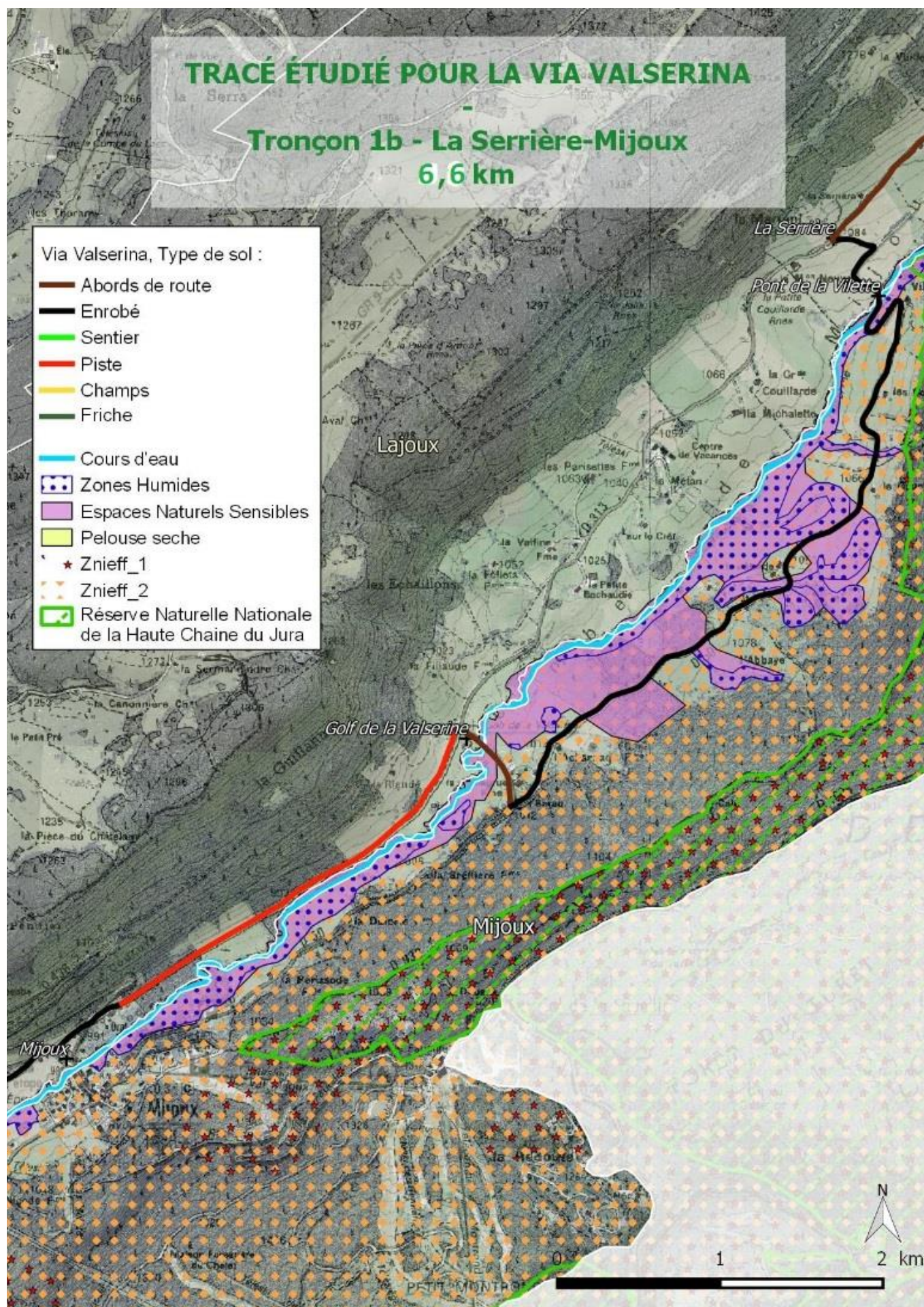


Exemple à Strasbourg

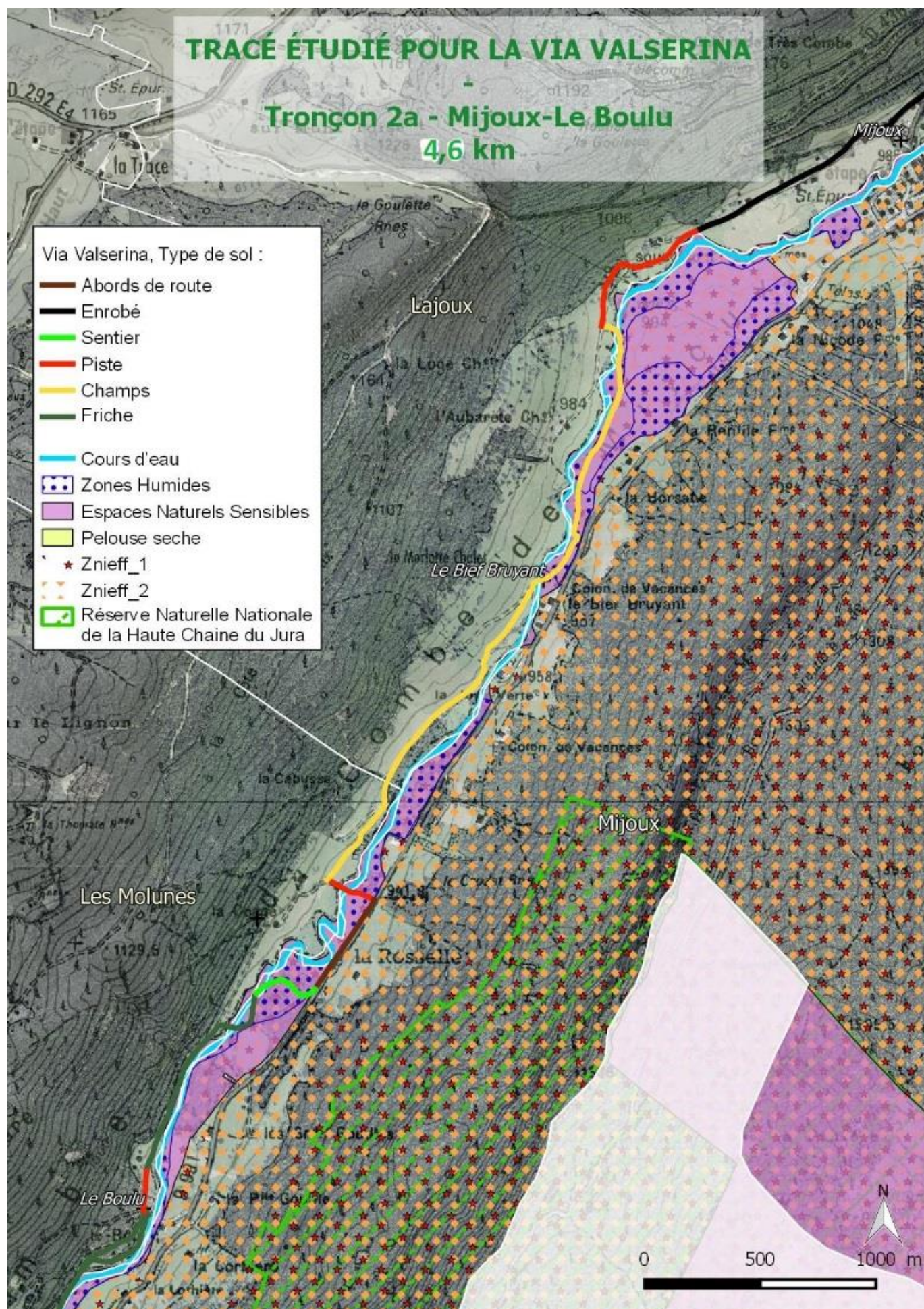










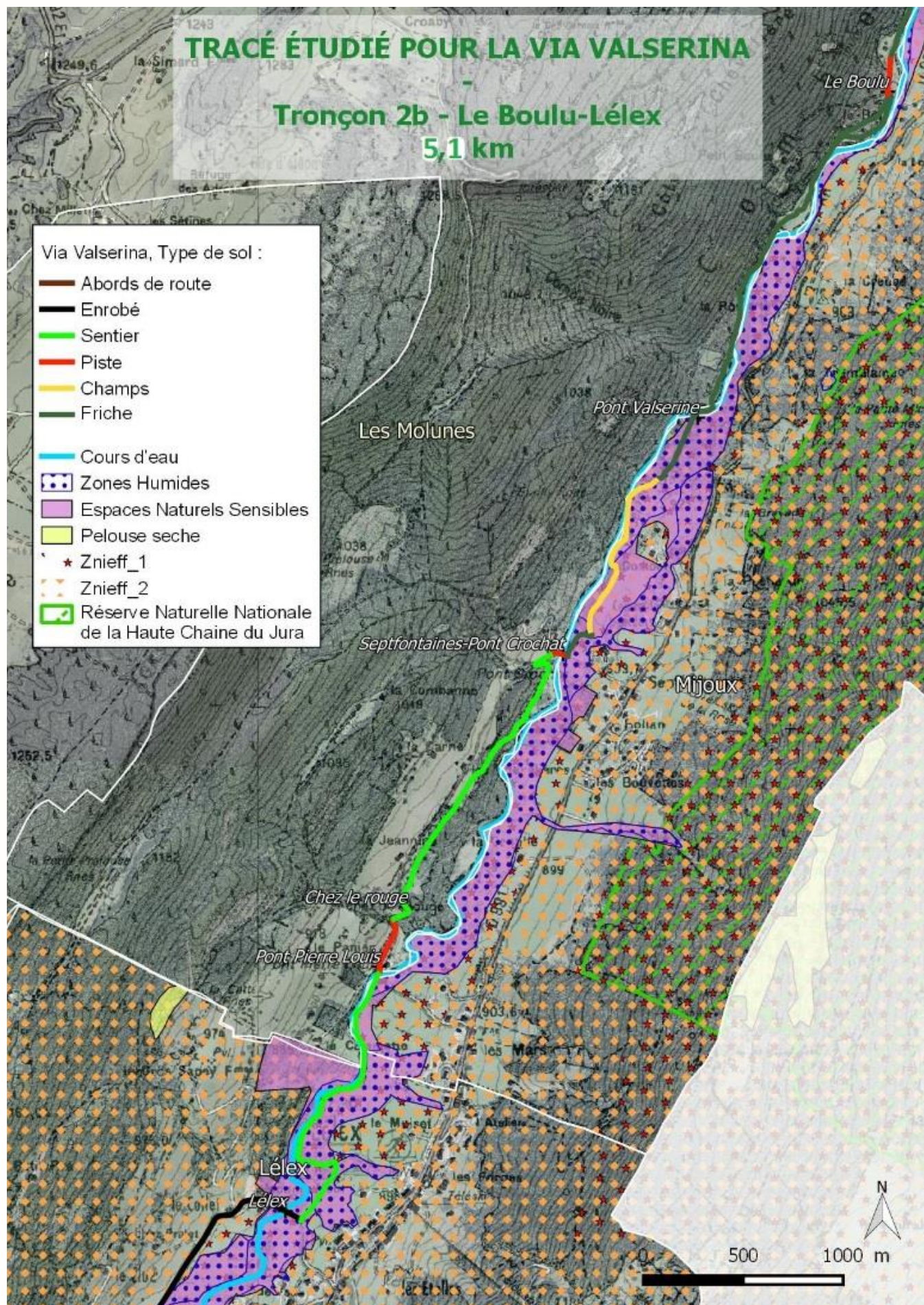




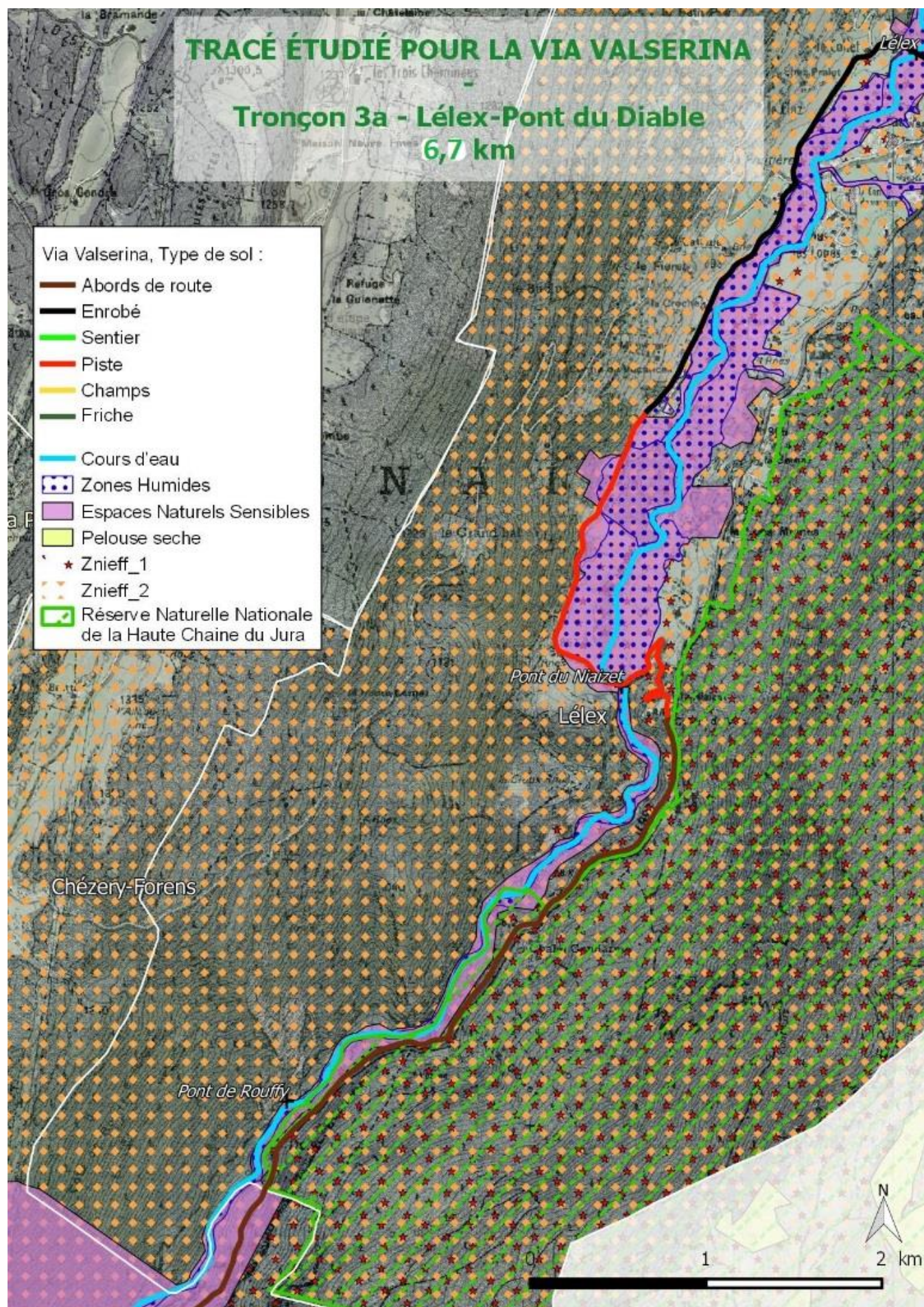
Route goudronnée



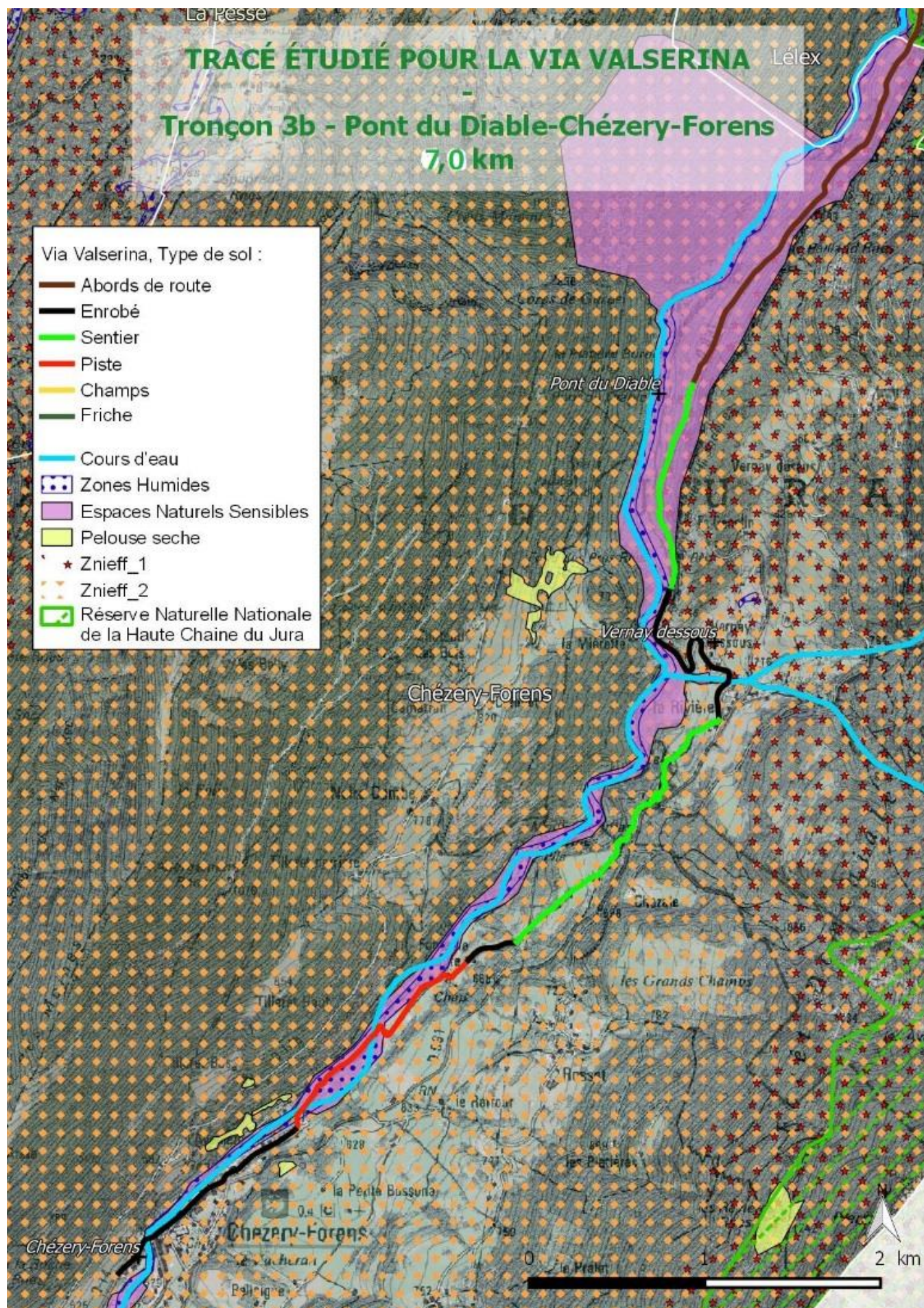
D994 à longer













Chemin existant



Arrivée à Chézery

4. Localisation des sites Natura 2000

