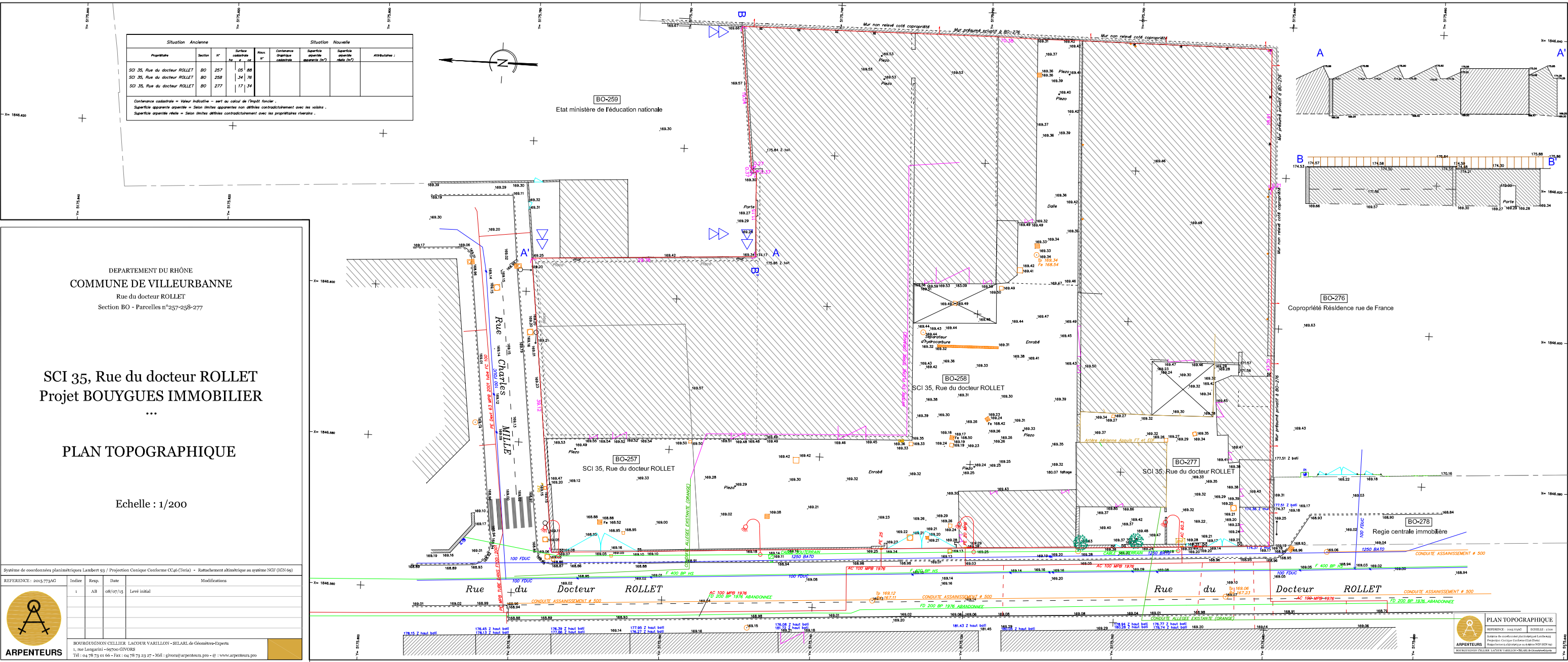


REAMENAGEMENT DU 35-39 RUE DOCTEUR ROLLET, A VILLEURBANNE

Annexe n°4 : Plans du projet



- ✓ Plan topographique
- ✓ Plan de situation
- ✓ Plans projet
- ✓ Schémas d'insertion

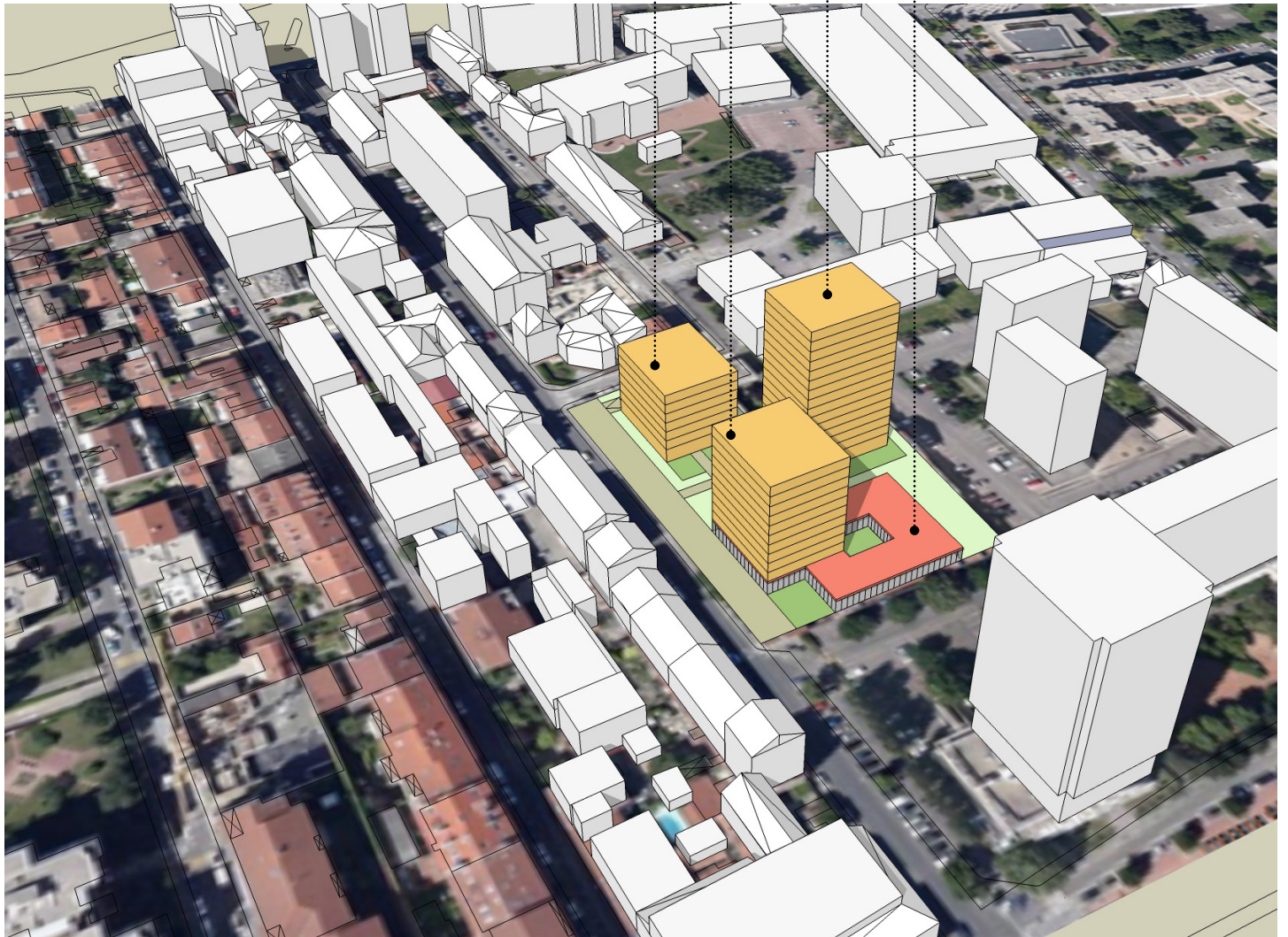


BAT C
R+10
30% de logements sociaux

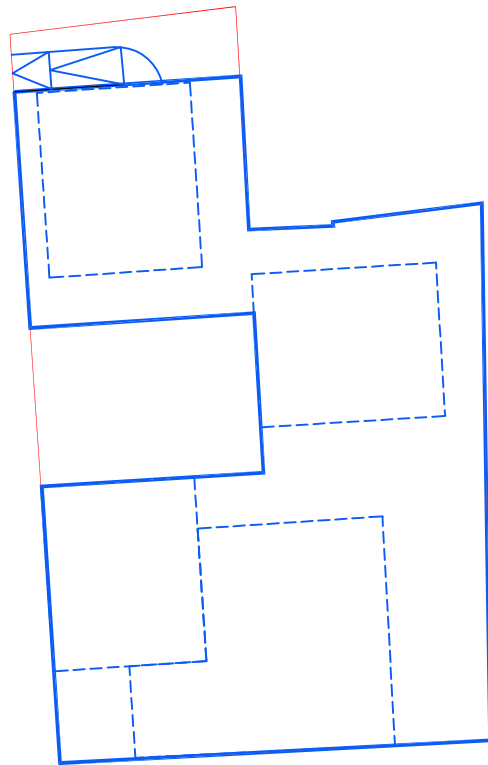
950 m² de surface utile en rez-de-chaussée

BAT A
R+6

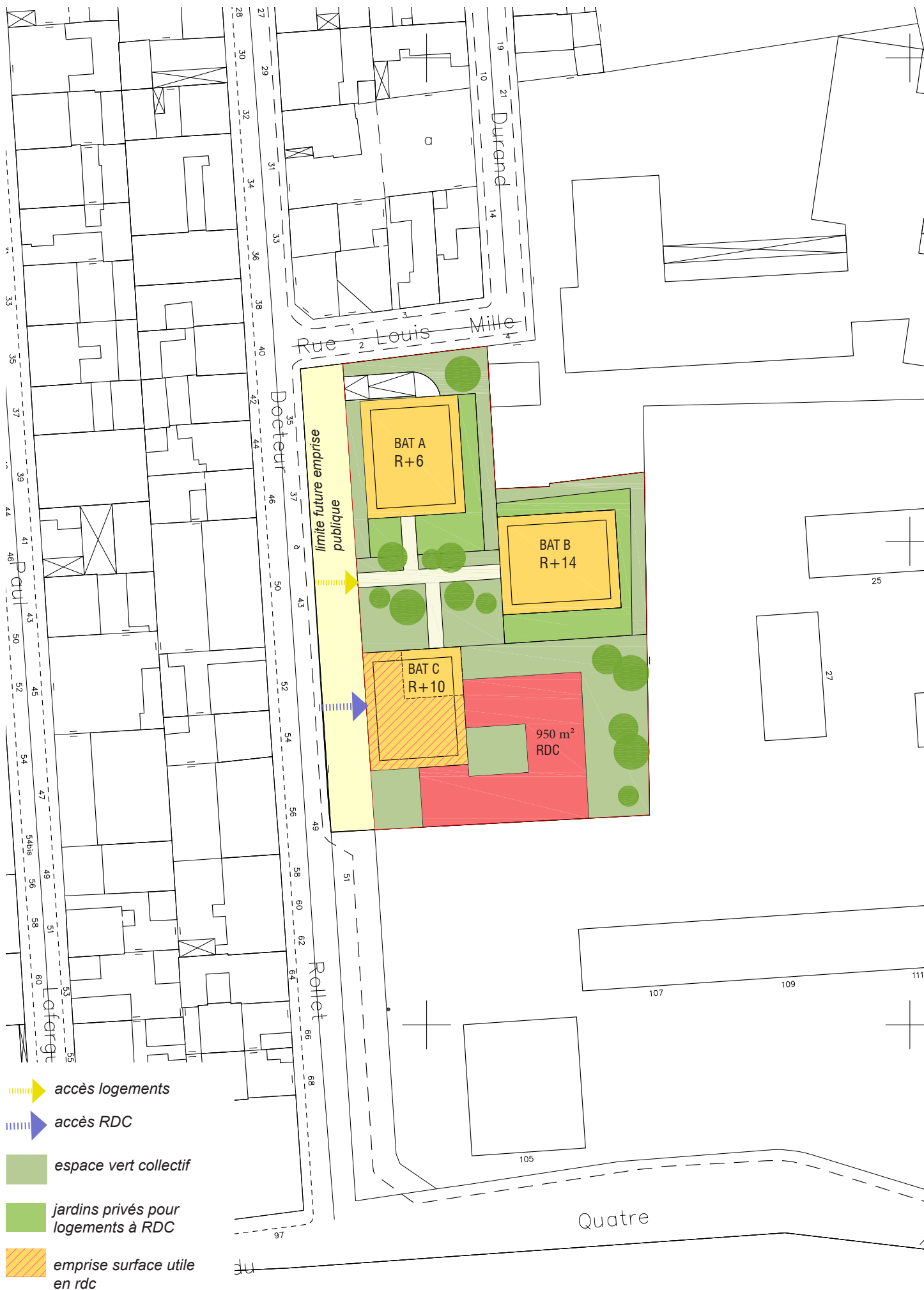
BAT B
R+14



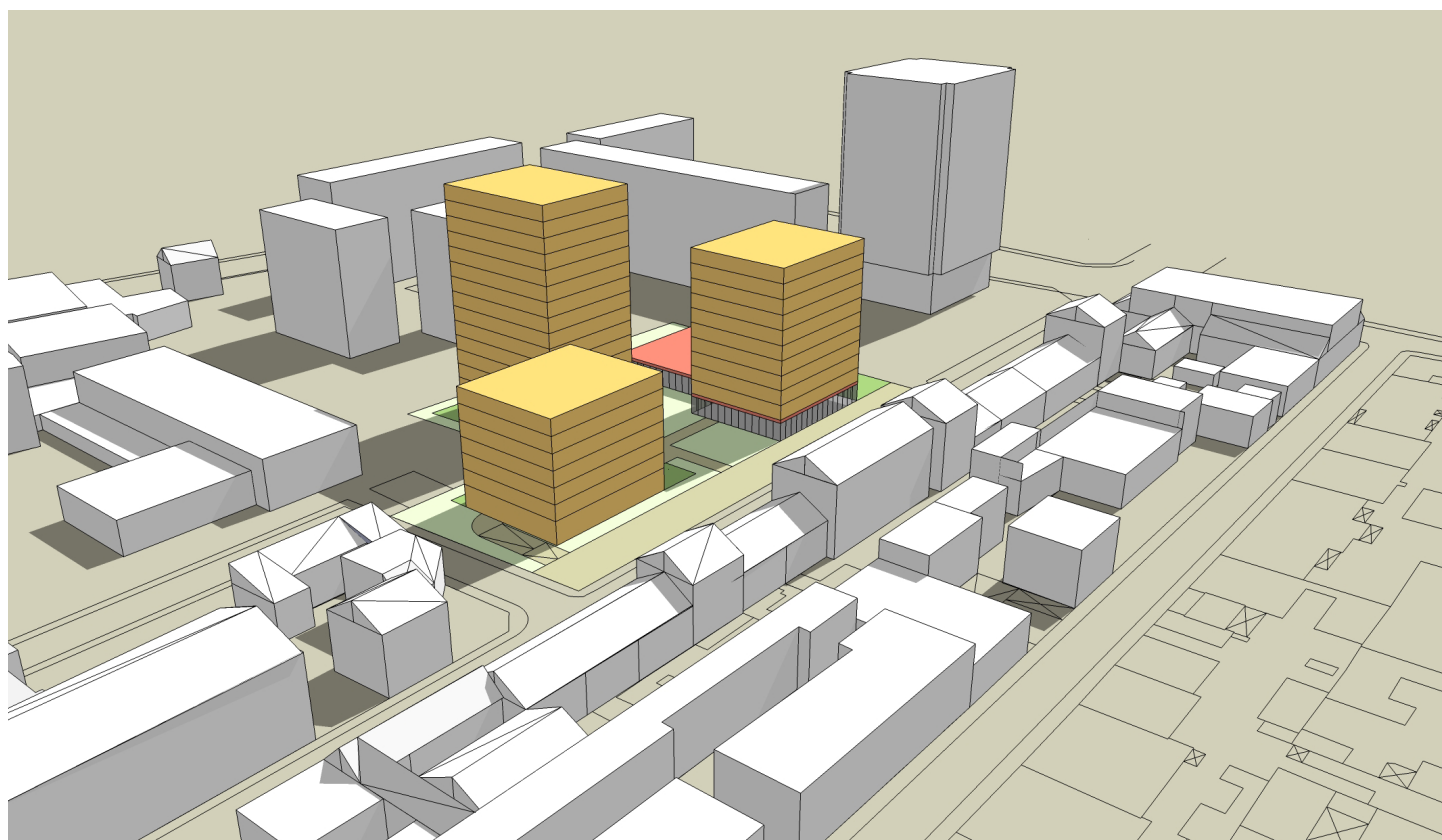
proposition de volumétrie



emprise parking R-1
165 places (conforme au PLU)



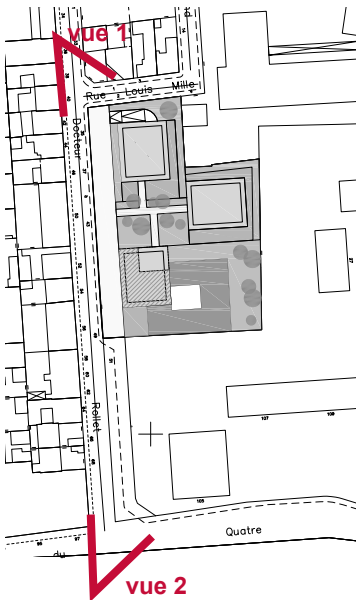
plan de situation échelle 1.1000 ème



Volumétrie de principe



Vue 1





Vue 2



Vue 3

