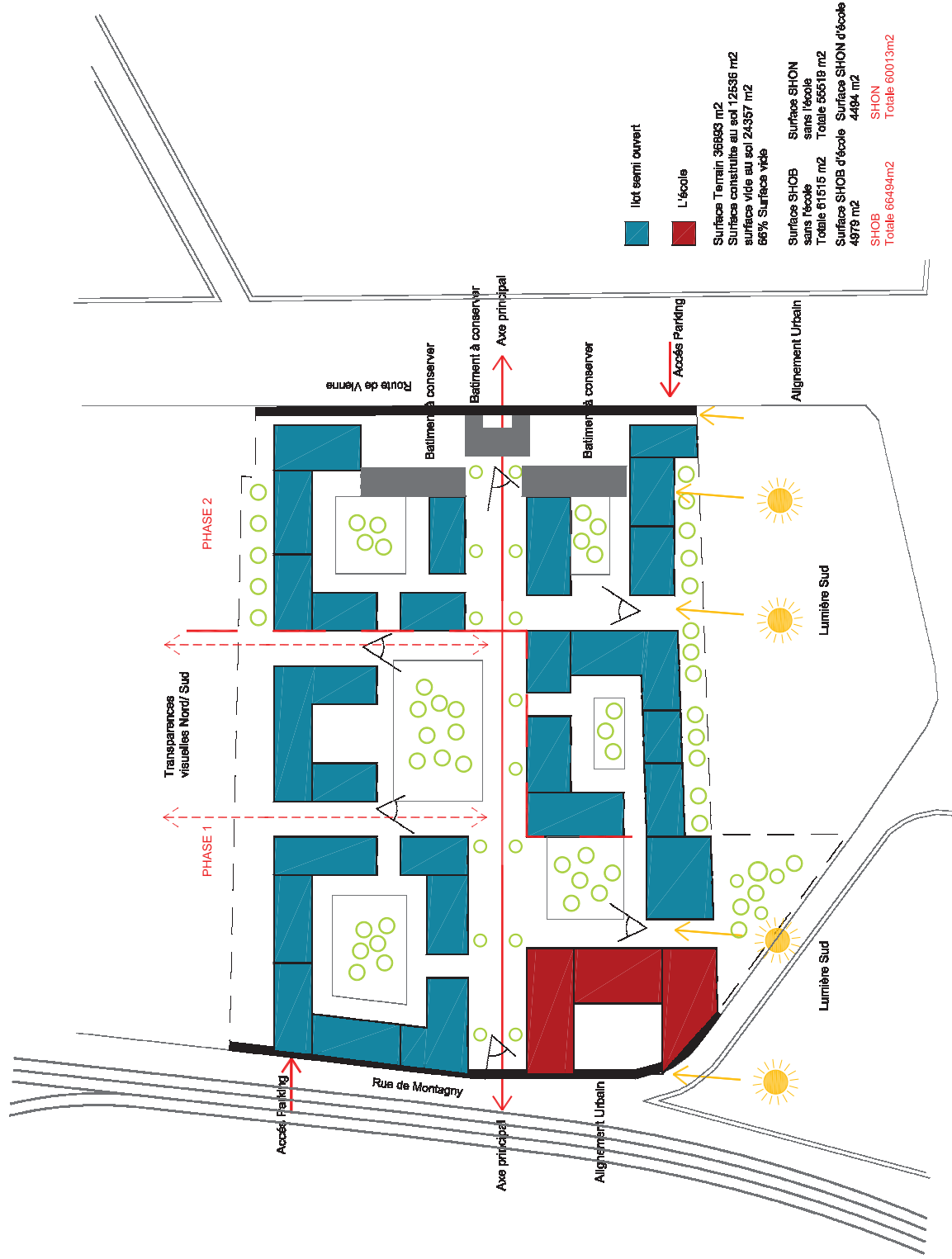
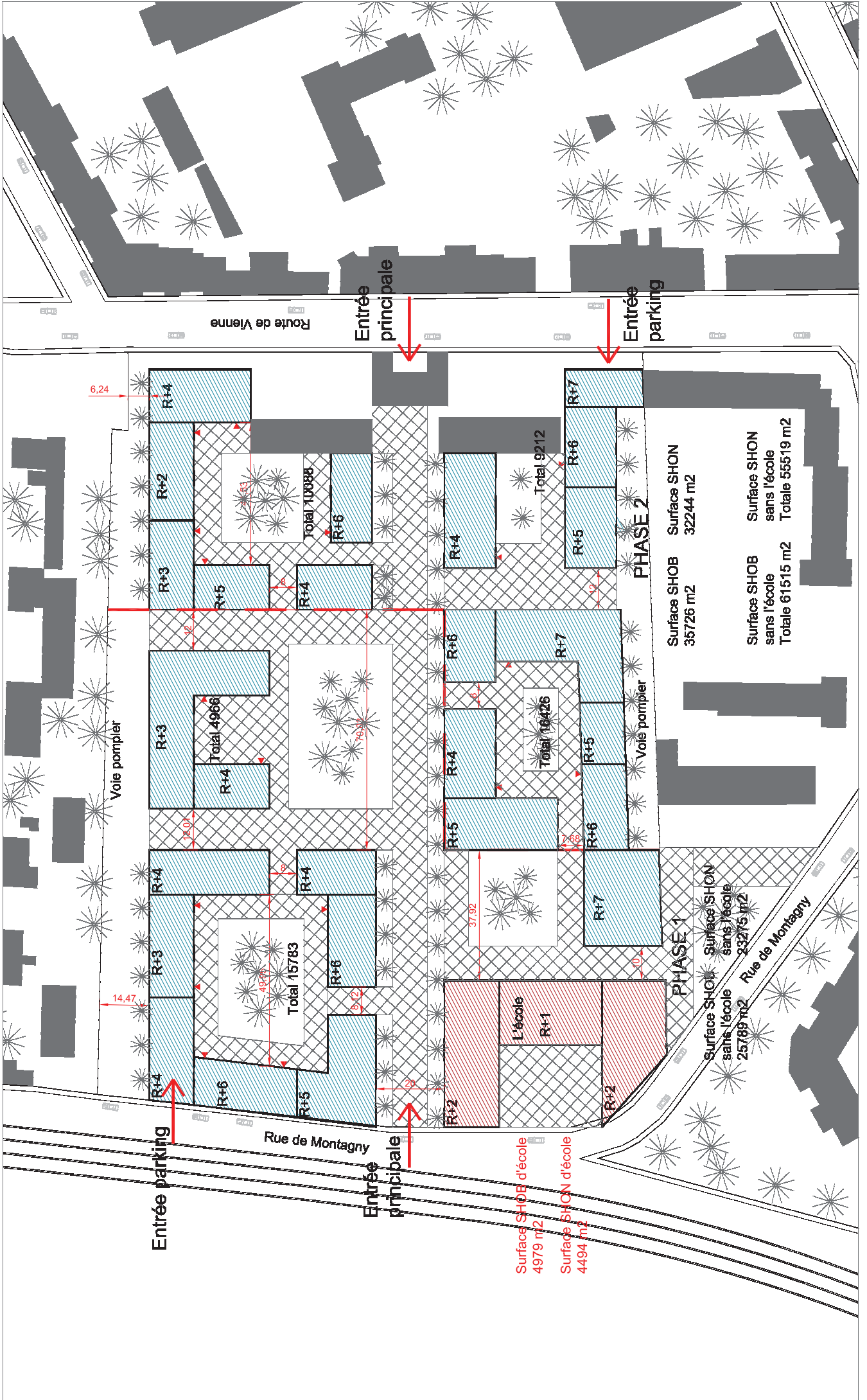


ANNEXE 3 volontaire
Présentation et évolution du projet
Novembre 2011 : Projet CABINET MIKOU







Entrée parking

Rue de Montagny

Entrée principale

Surface SHOB d'école
4979 m²

Surface SHON d'école
4494 m²

PHASE 1
Surface SHOB sans l'école
25769 m²
Surface SHON sans l'école
23275 m²

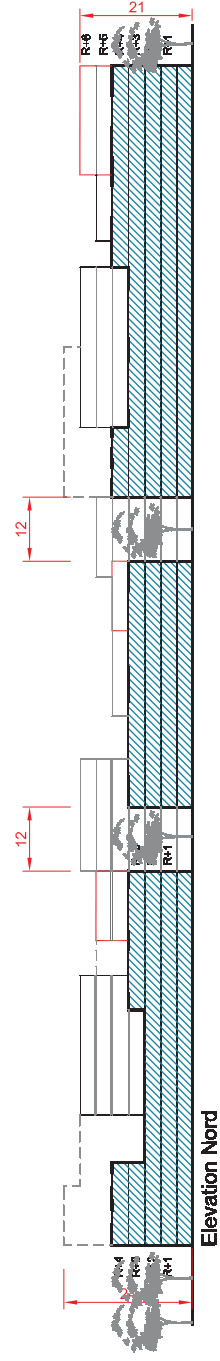
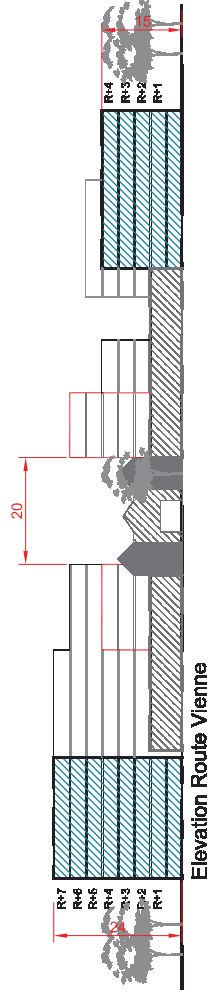
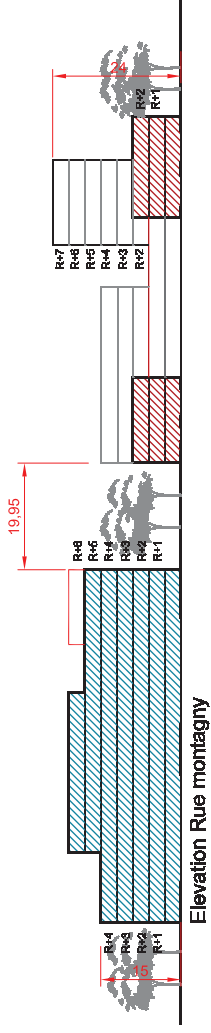
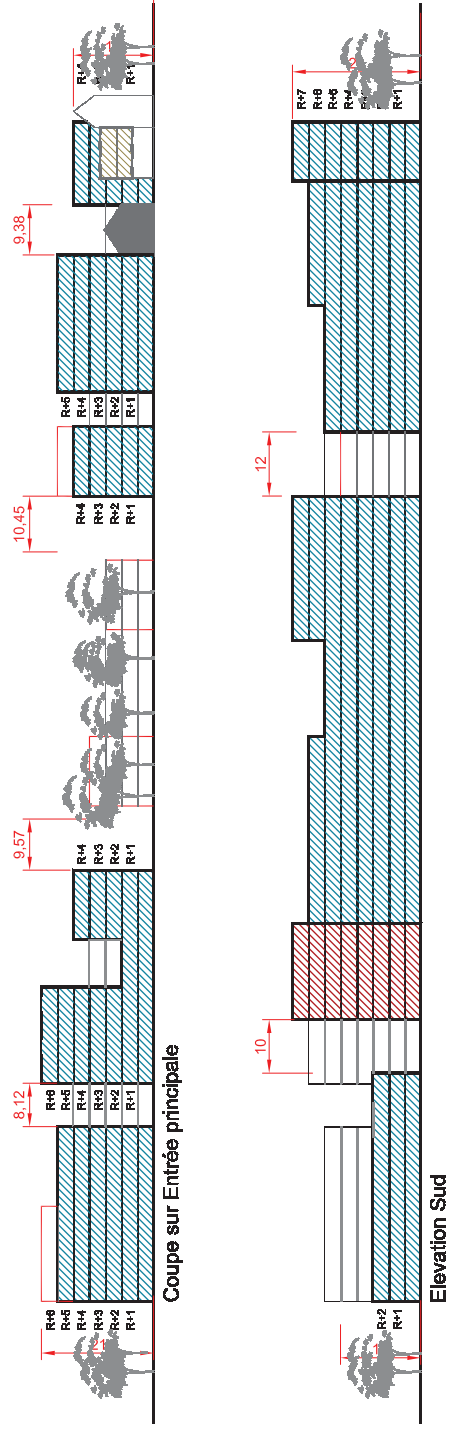
PHASE 2
Surface SHOB 35726 m²
Surface SHON 32244 m²
Surface SHOB sans l'école
Totale 61515 m²
Surface SHON sans l'école
Totale 55519 m²

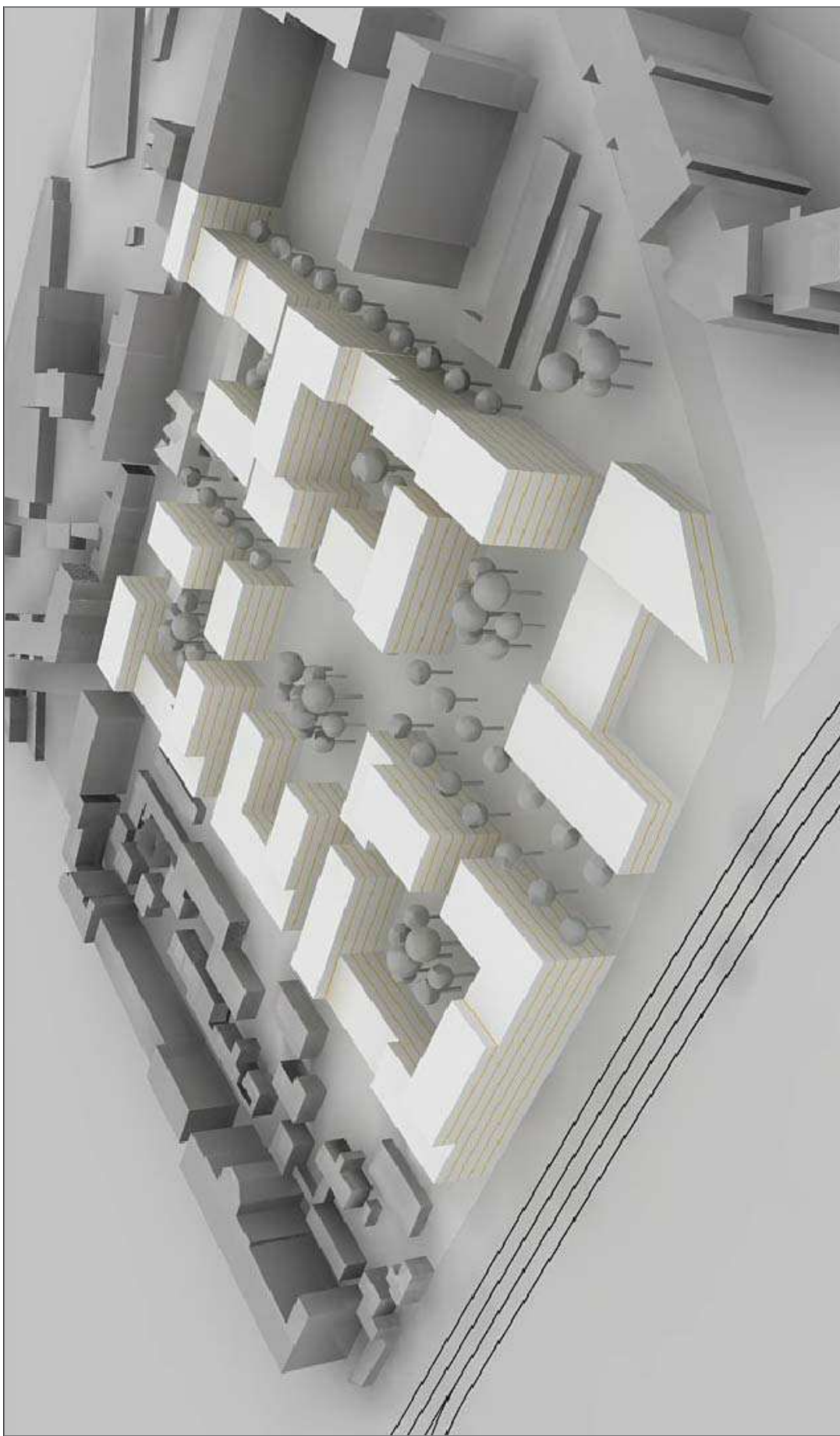
Voie pompiers

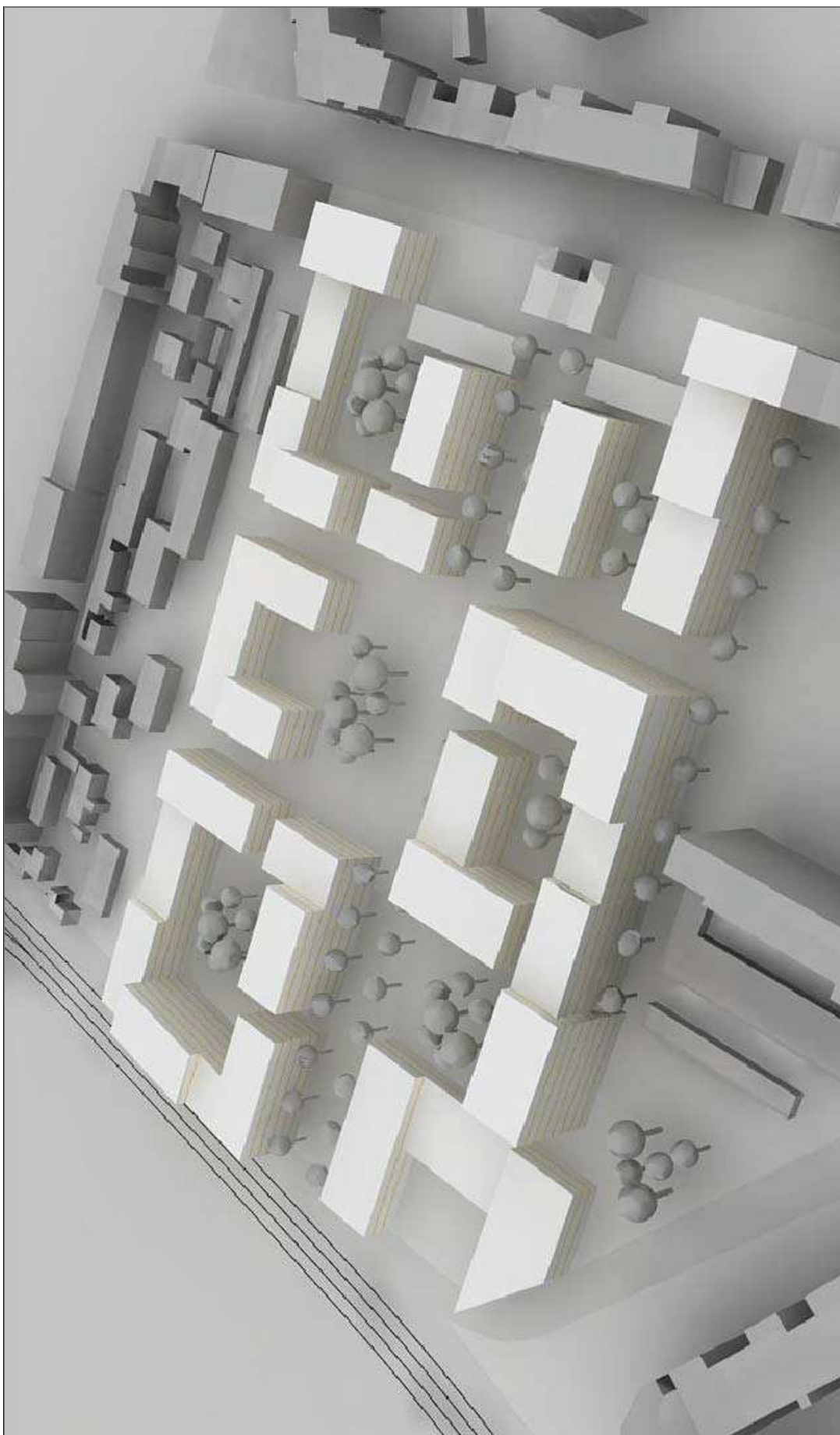
Entrée principale

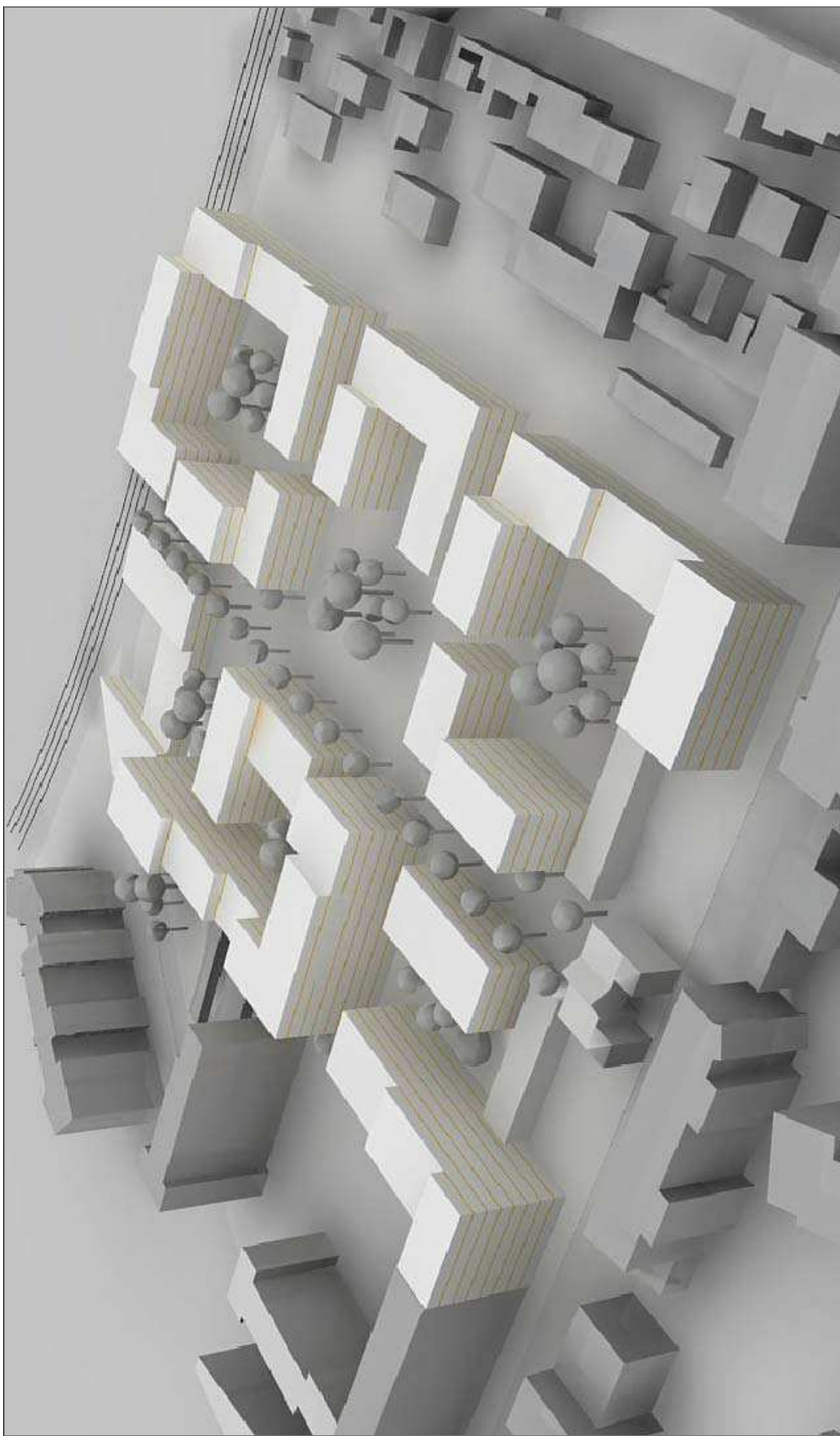
Entrée parking

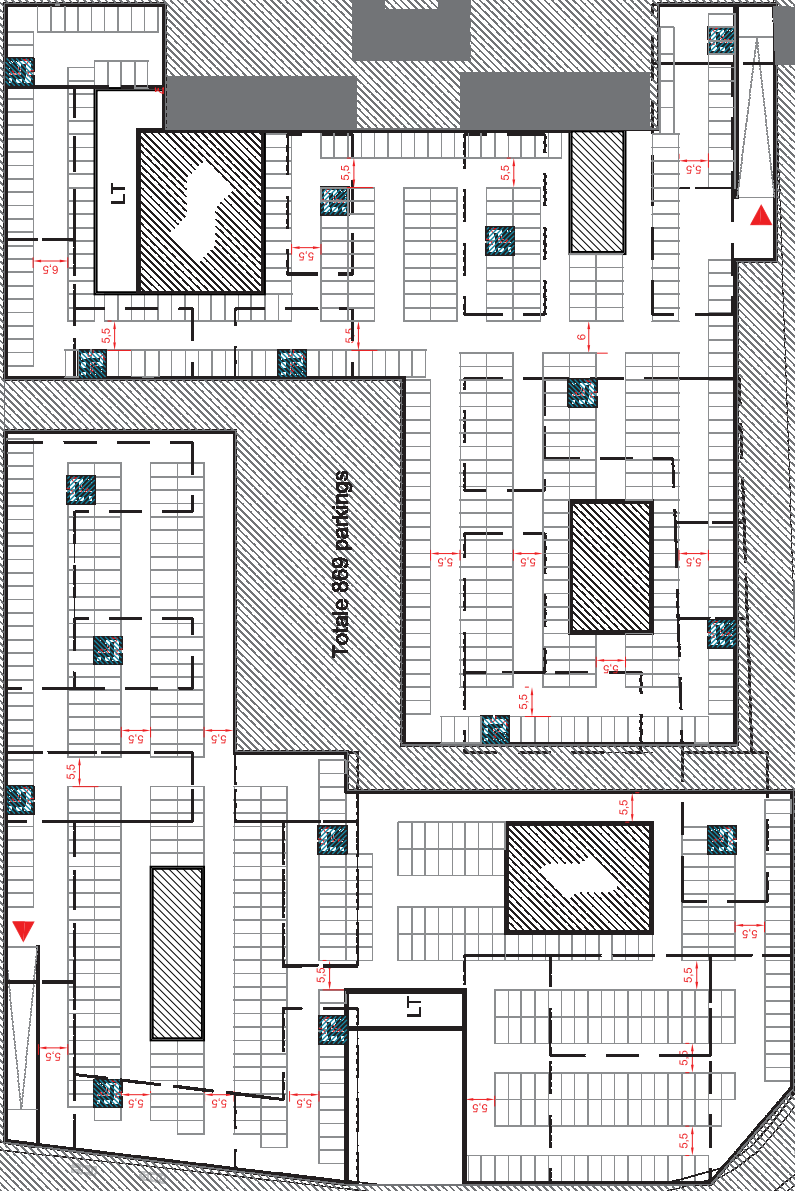
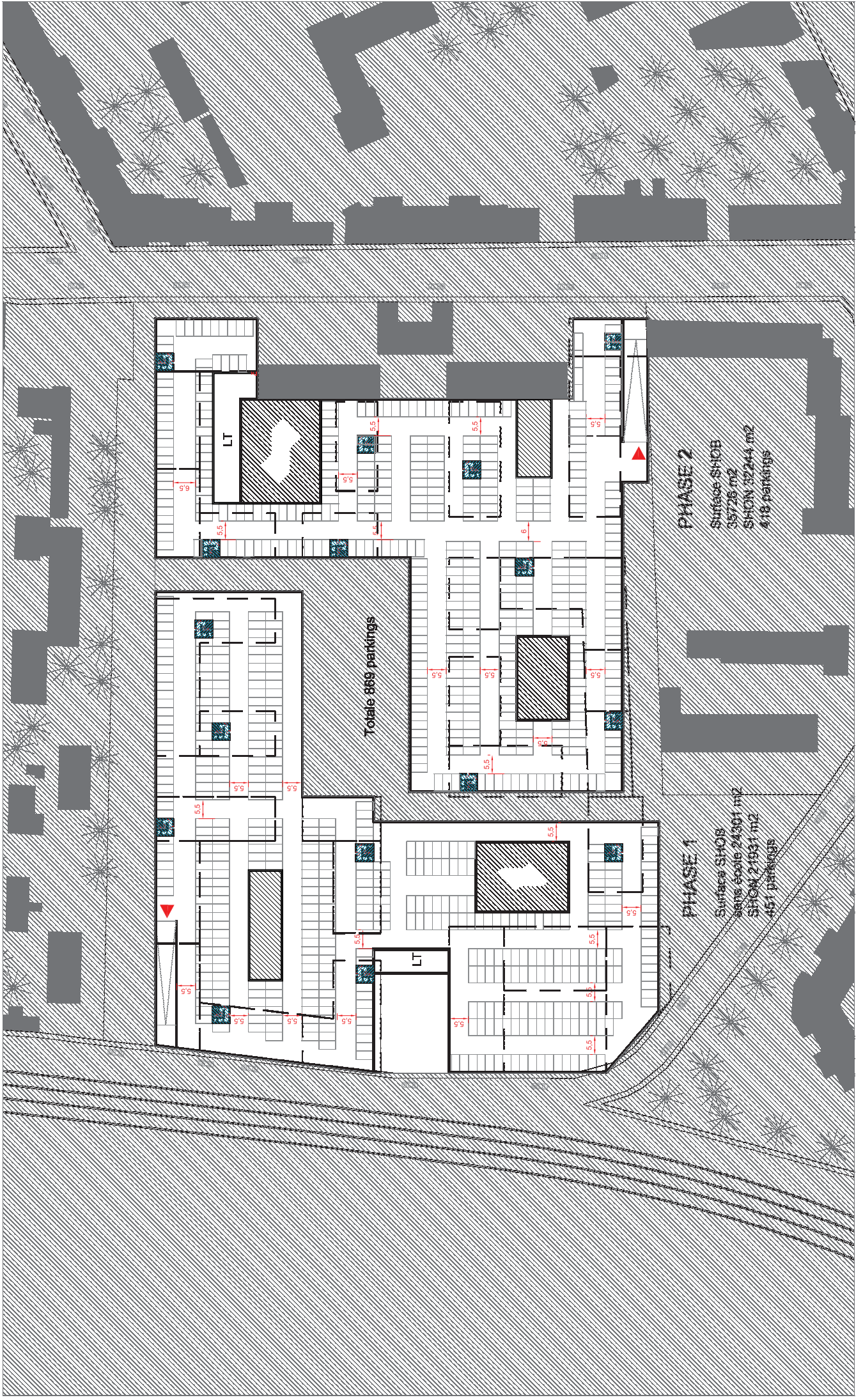
Route de Vienne











Totale 869 parkings

PHASE 2

Surface SHOB
35726 m²
SHON 32244 m²
418 parkings

PHASE 1

Surface SHOB
sans école 24301 m²
SHON 21931 m²
451 parkings

ANNEXE 3 volontaire
Présentation et évolution du projet
Janvier 2012 : Projet CABINET MIKOU



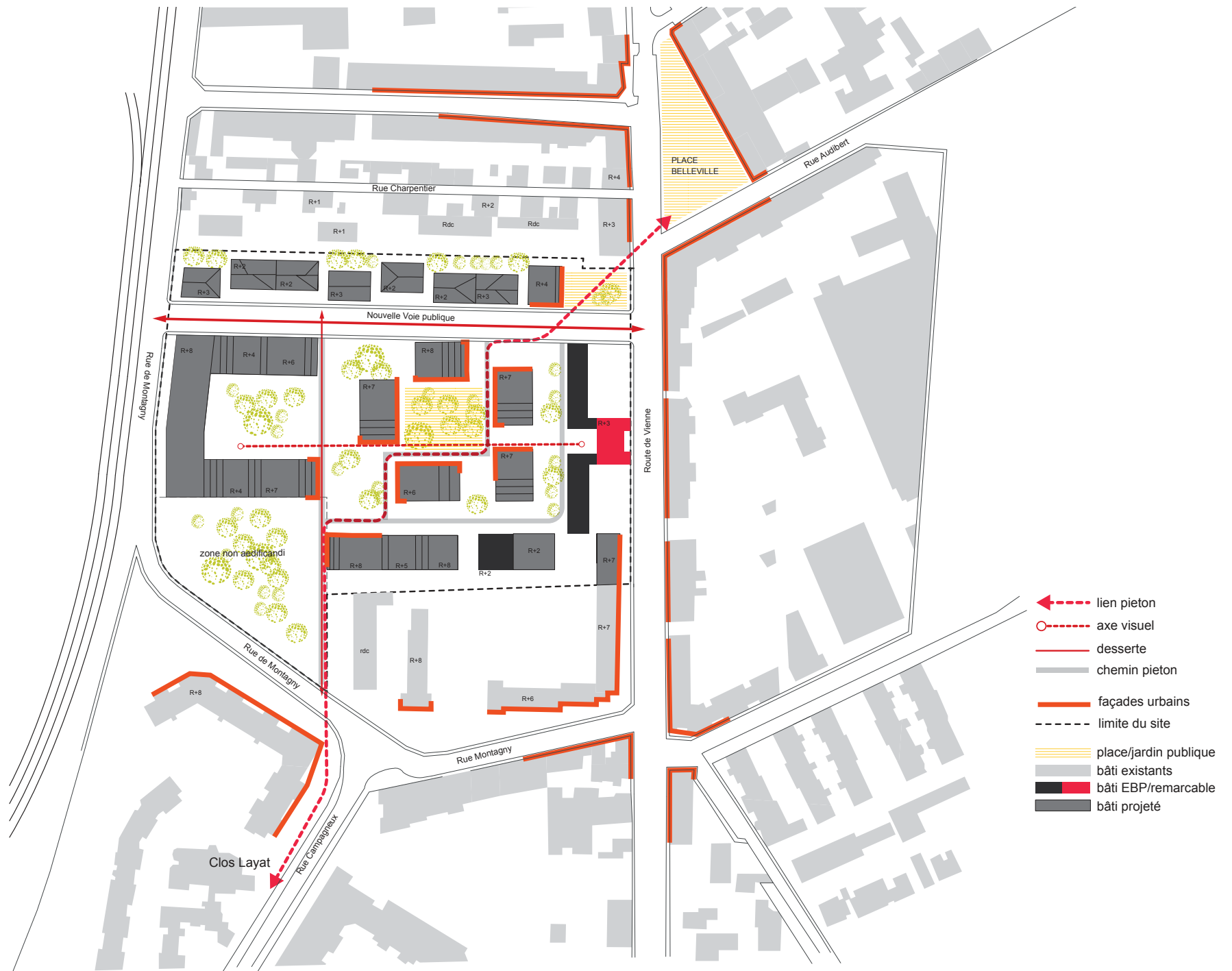
PROJET ROUTE DE VIENNE A LYON
VINCI IMMOBILIER PROMOTION

MIKOU DESIGN STUDIO

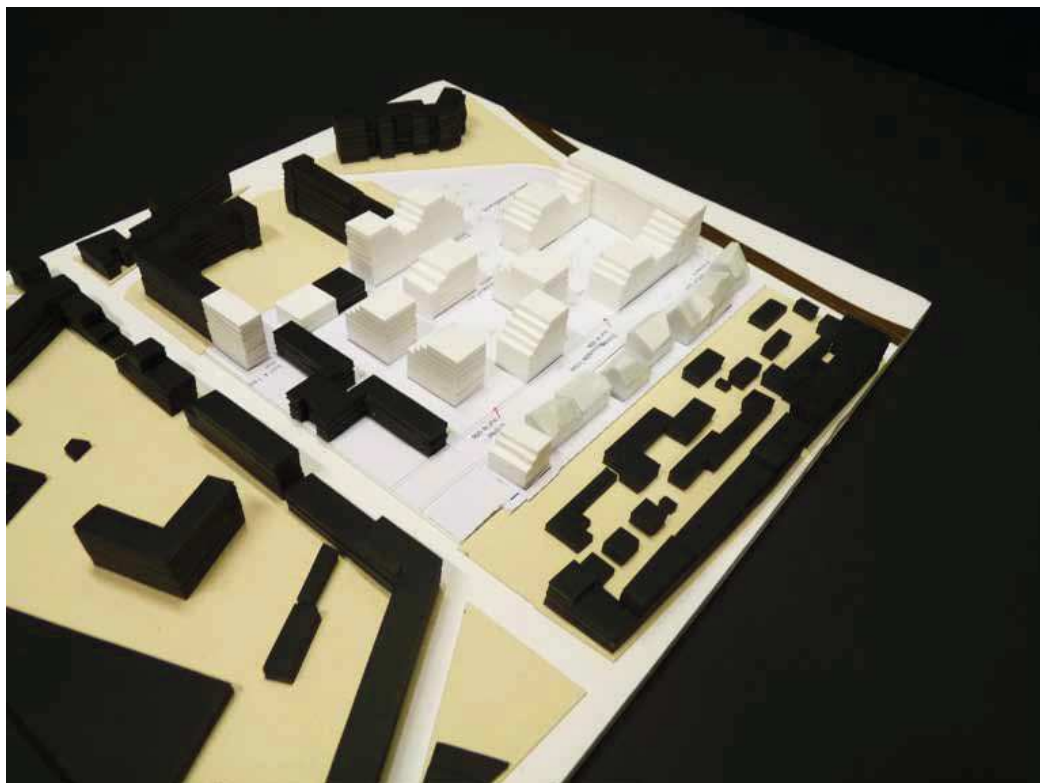
27 JANVIER 2012

OPTION A



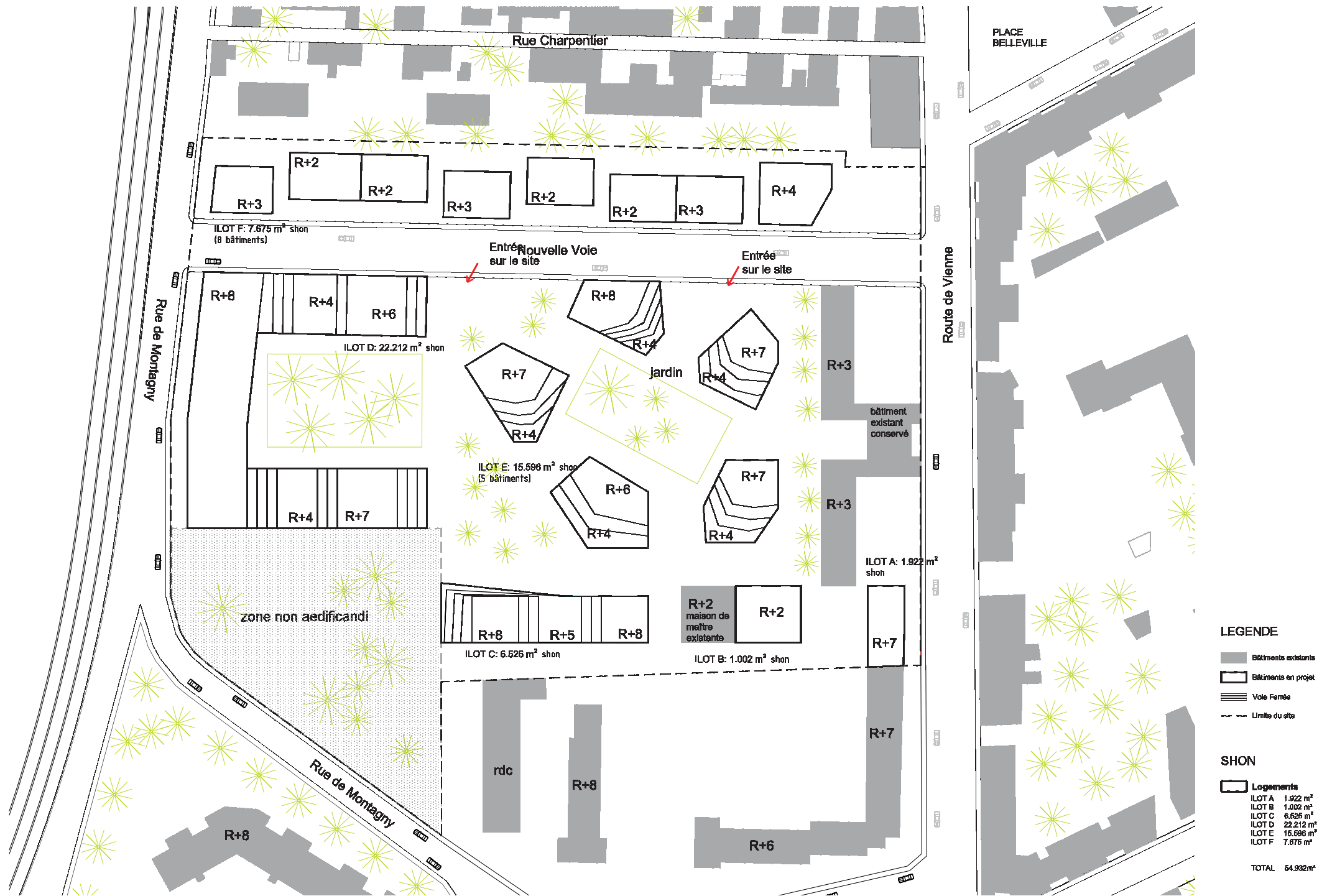


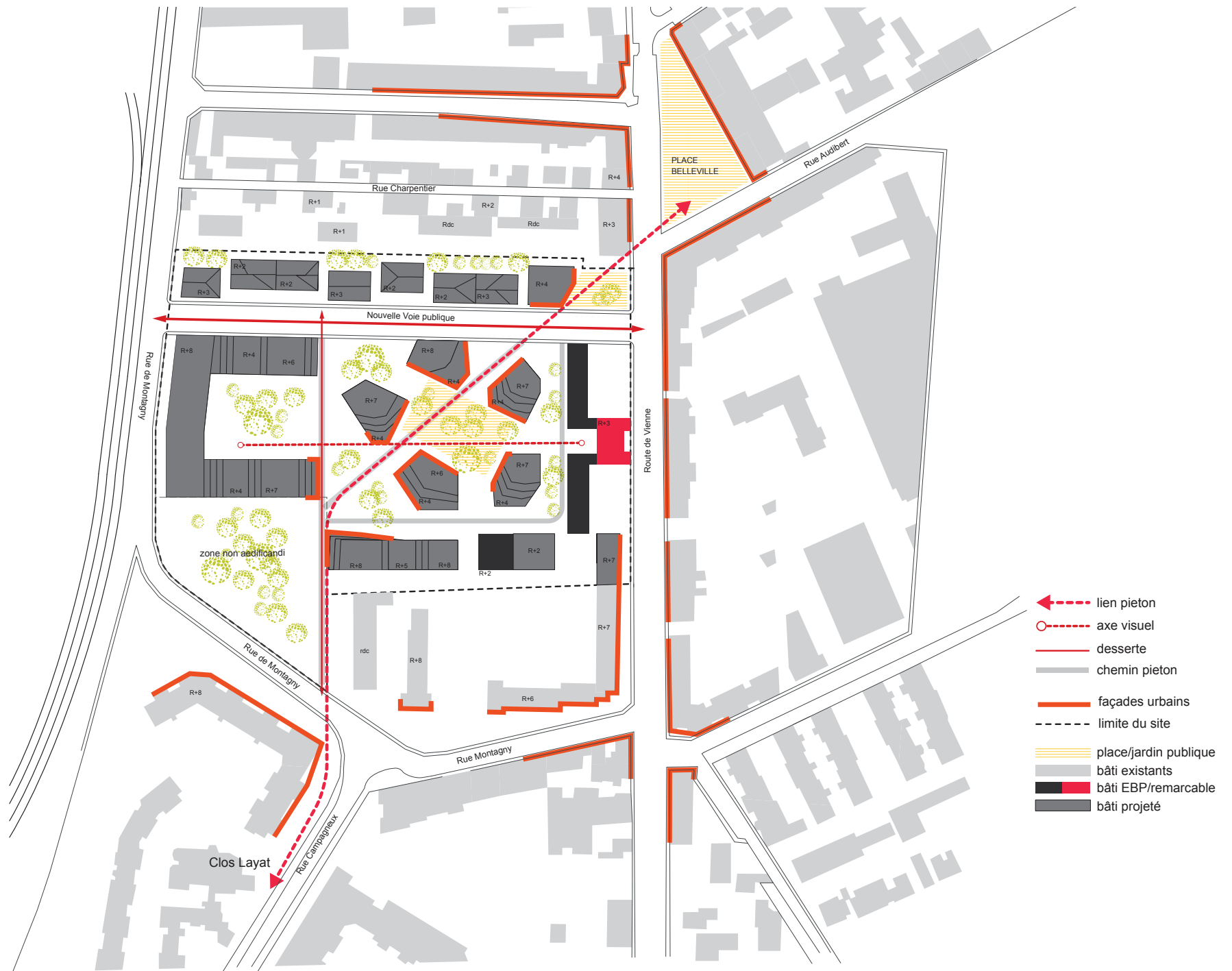




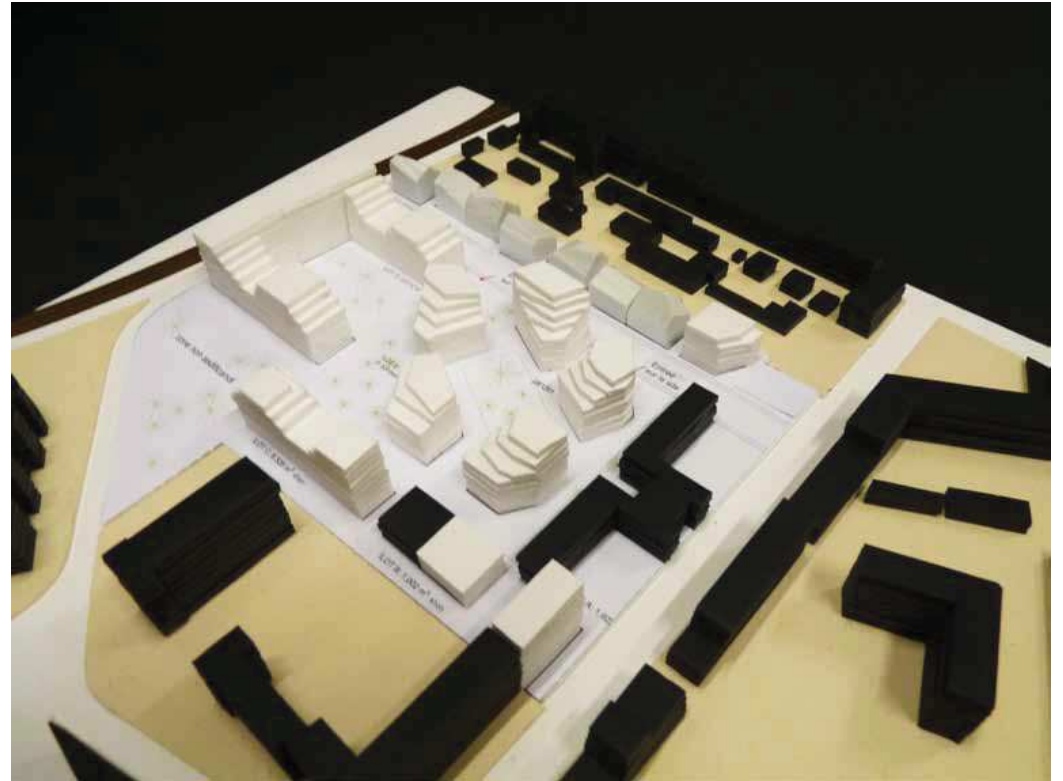


OPTION B





- ← - - - - lien piéton
- - - - - axe visuel
- — — — desserte
- — — — chemin piéton
- — — — façades urbains
- - - - limite du site
- — — — place/jardin public
- — — — bâti existants
- — — — bâti EBP/remarquable
- — — — bâti projeté





ANNEXE 3 volontaire
Présentation et évolution du projet
Septembre 2015 : Projet ATELIER ROCHE

