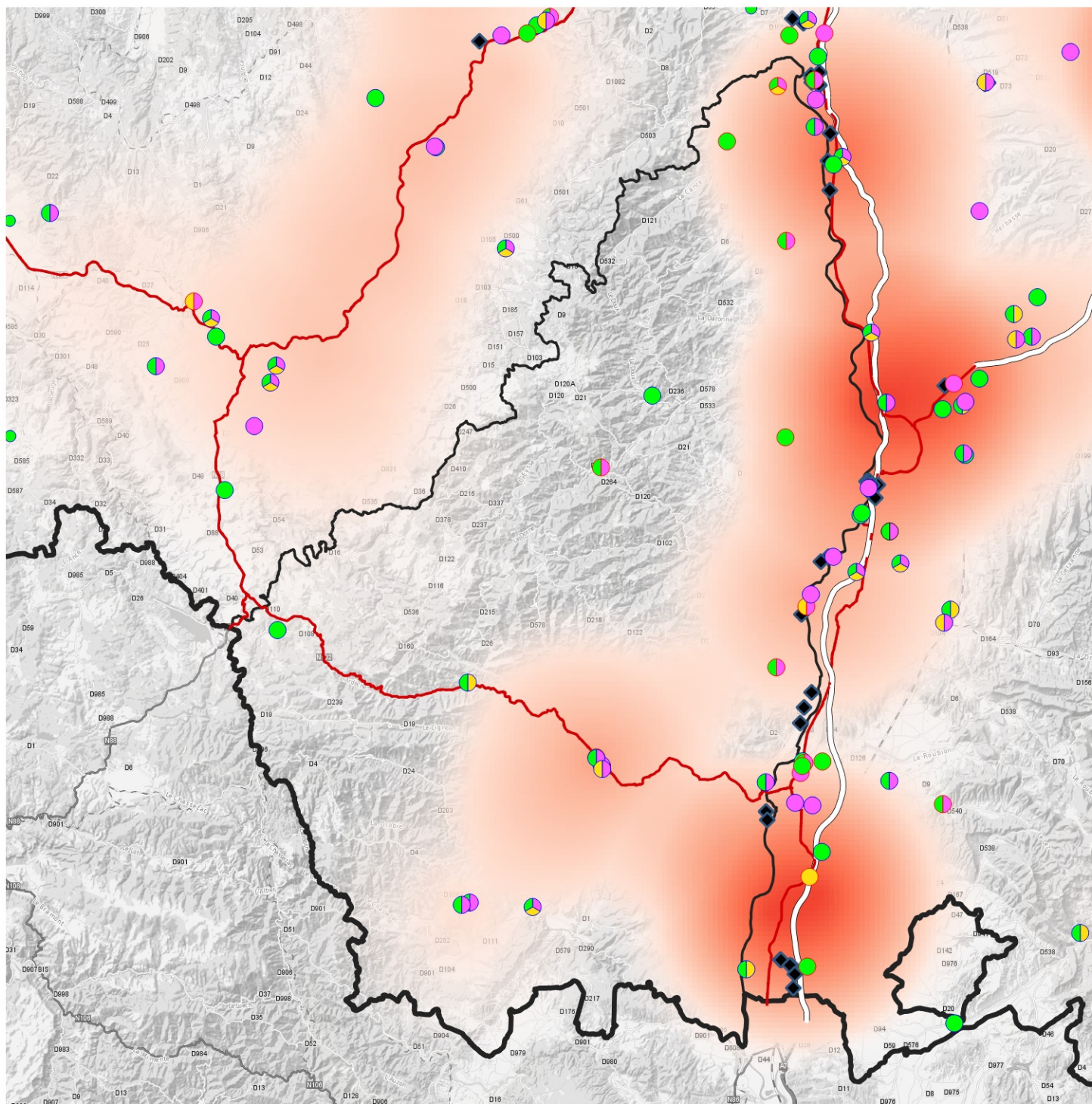


## Schéma régional des carrières Zoom prospective et réseaux ARDECHE 2026



## Ressources secondaires

- ☐ Une installation acceptant des déchets venant de toutes les entreprises
- ☐ Une installation interne acceptant uniquement les déchets de mon entreprise










## Ressources secondaires

- regroupement
- tri
- recyclage

## Réseau routier

- Nationale  
◆ Noeuds intermodaux

Densité de production maxi en tonnes  
année 2026

- |   |         |
|---|---------|
|  | 0       |
|  | 351000  |
|  | 702000  |
|  | 1053000 |
|  | 1404000 |
|  | 1755000 |
|  | 2106000 |
|  | 2430000 |
|  | 2700000 |

Les données à l'échelle 1/100 000 sont visibles sur  
[https://carto.datara.gouv.fr/1/carte\\_schema\\_carriere\\_r84.map](https://carto.datara.gouv.fr/1/carte_schema_carriere_r84.map)