



LOGEMENTS EIFFAGE IMMOBILIER

Site A-Raymond

Rue Marx Dormoy, GRENOBLE

10.04.2014

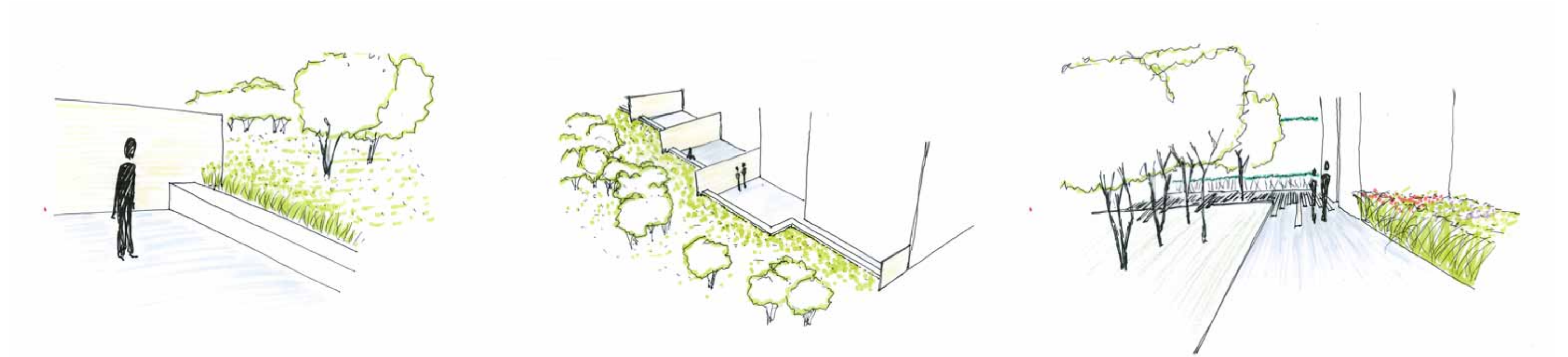
 **EIFFAGE**
IMMOBILIER

PATRIARCHE
&CO

Plan masse



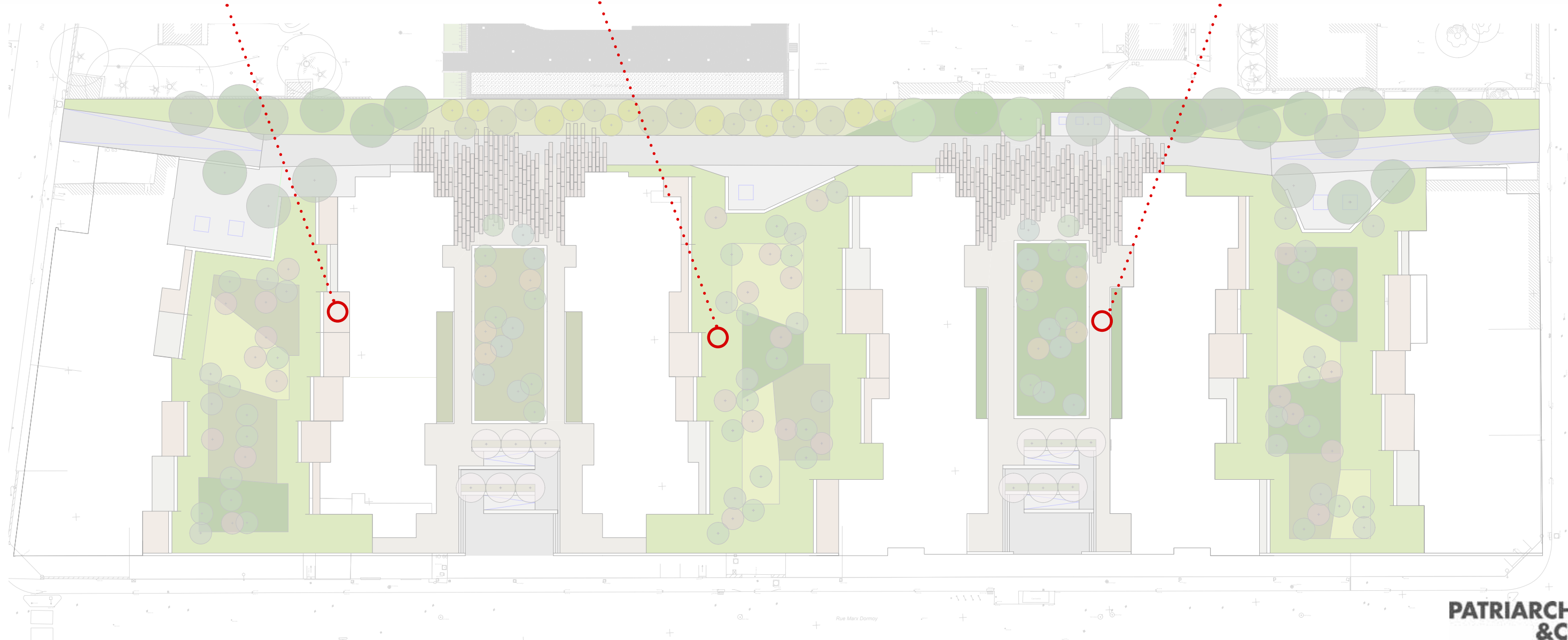
Croquis



Terrasse privée

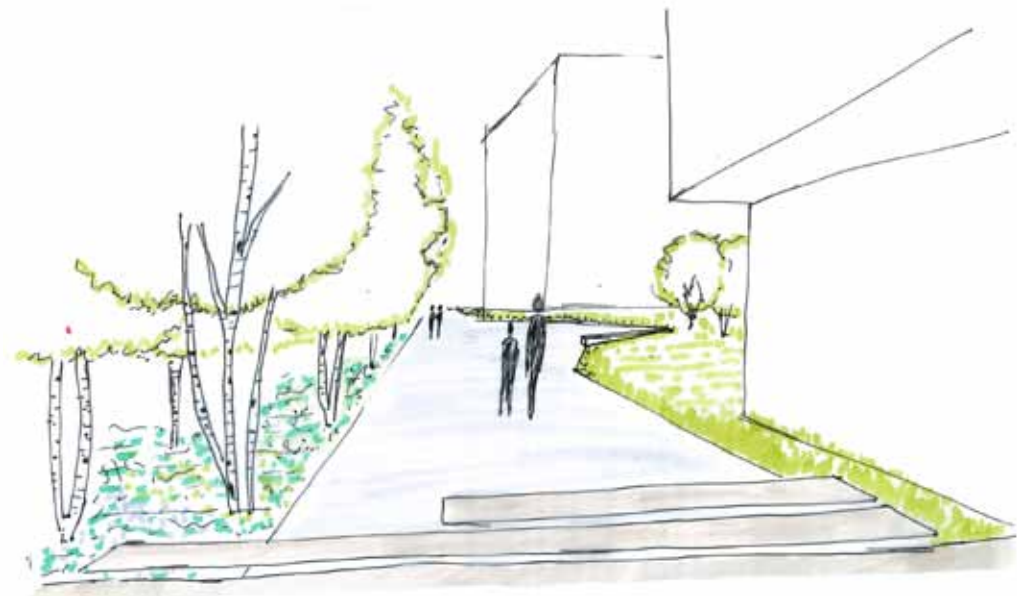
Jardin central

Jardin central



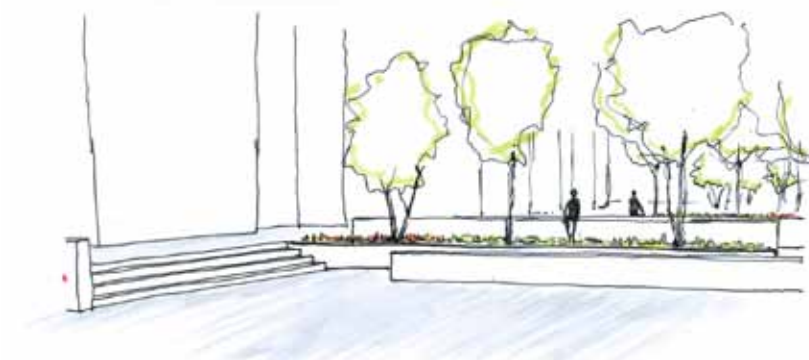
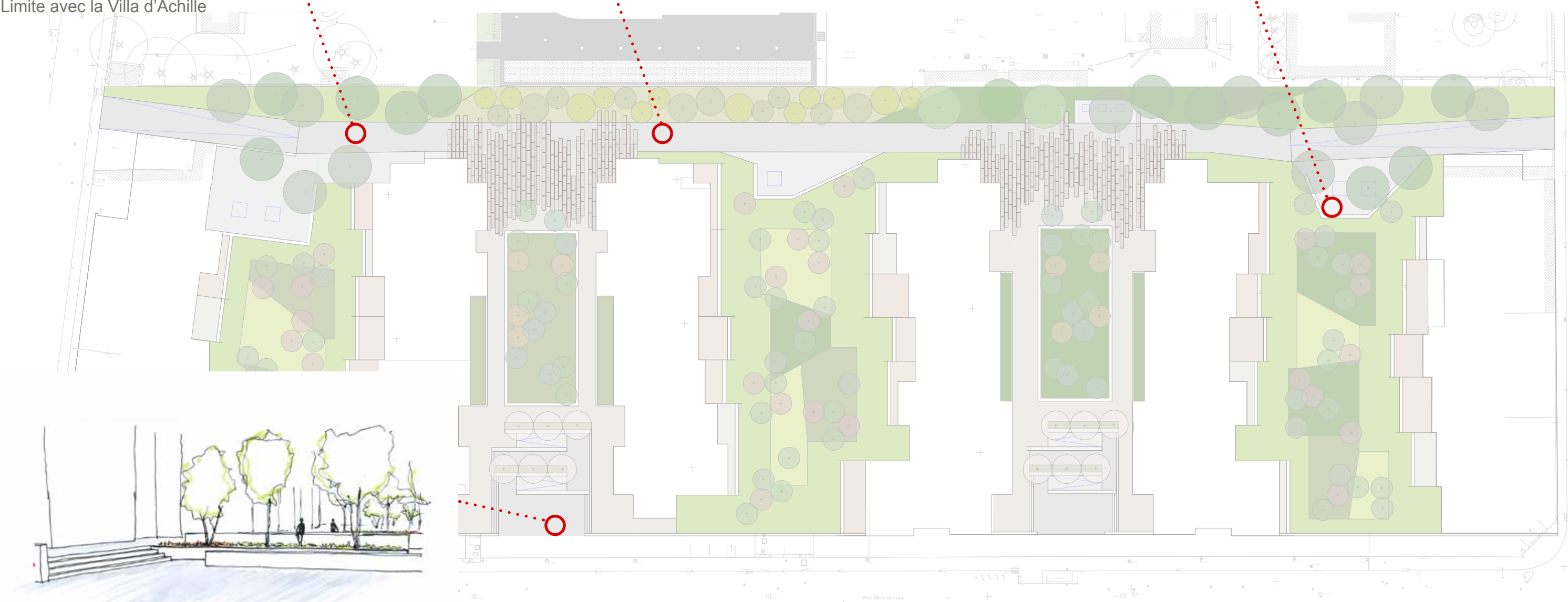
Croquis

Limite avec le bâtiment Holding



Assises de la promenade

Limite avec la Villa d'Achille

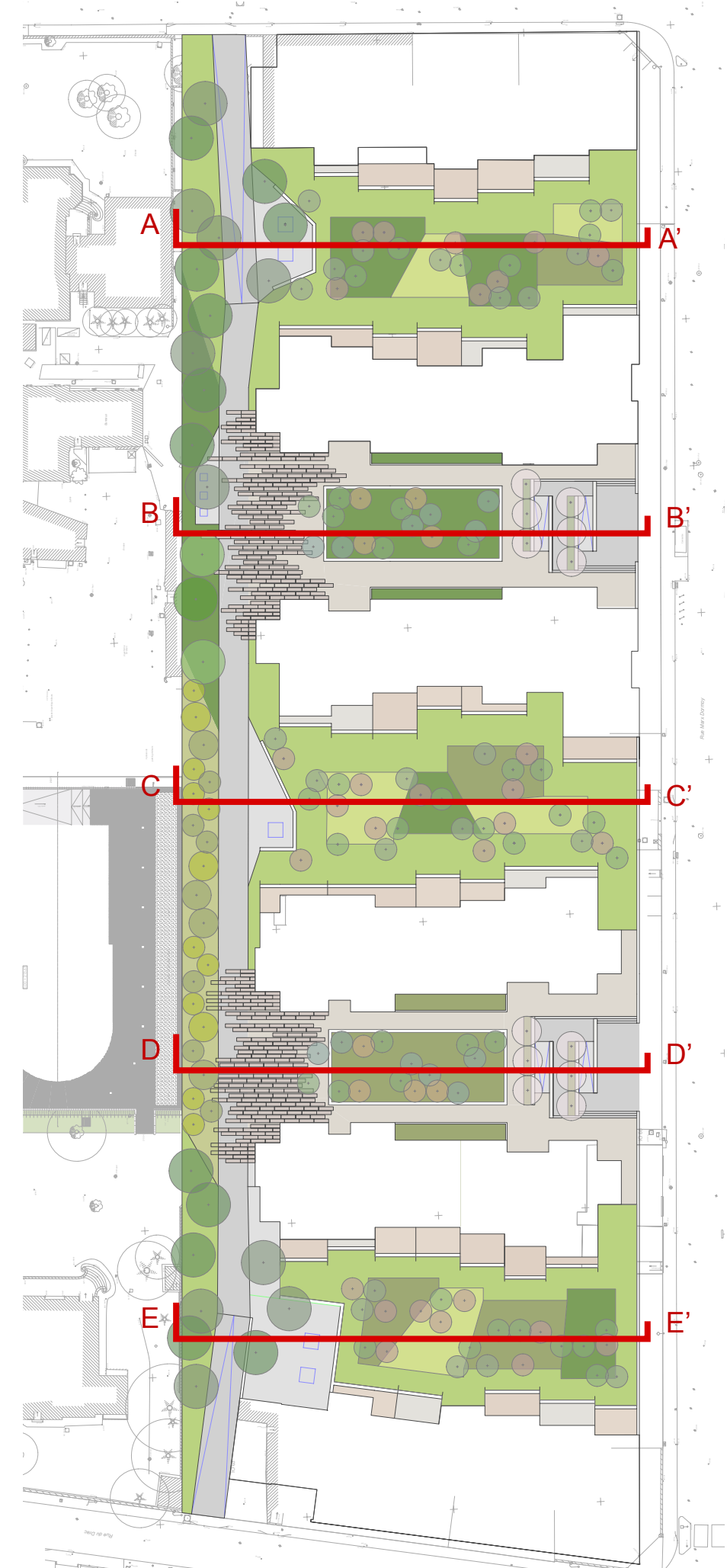
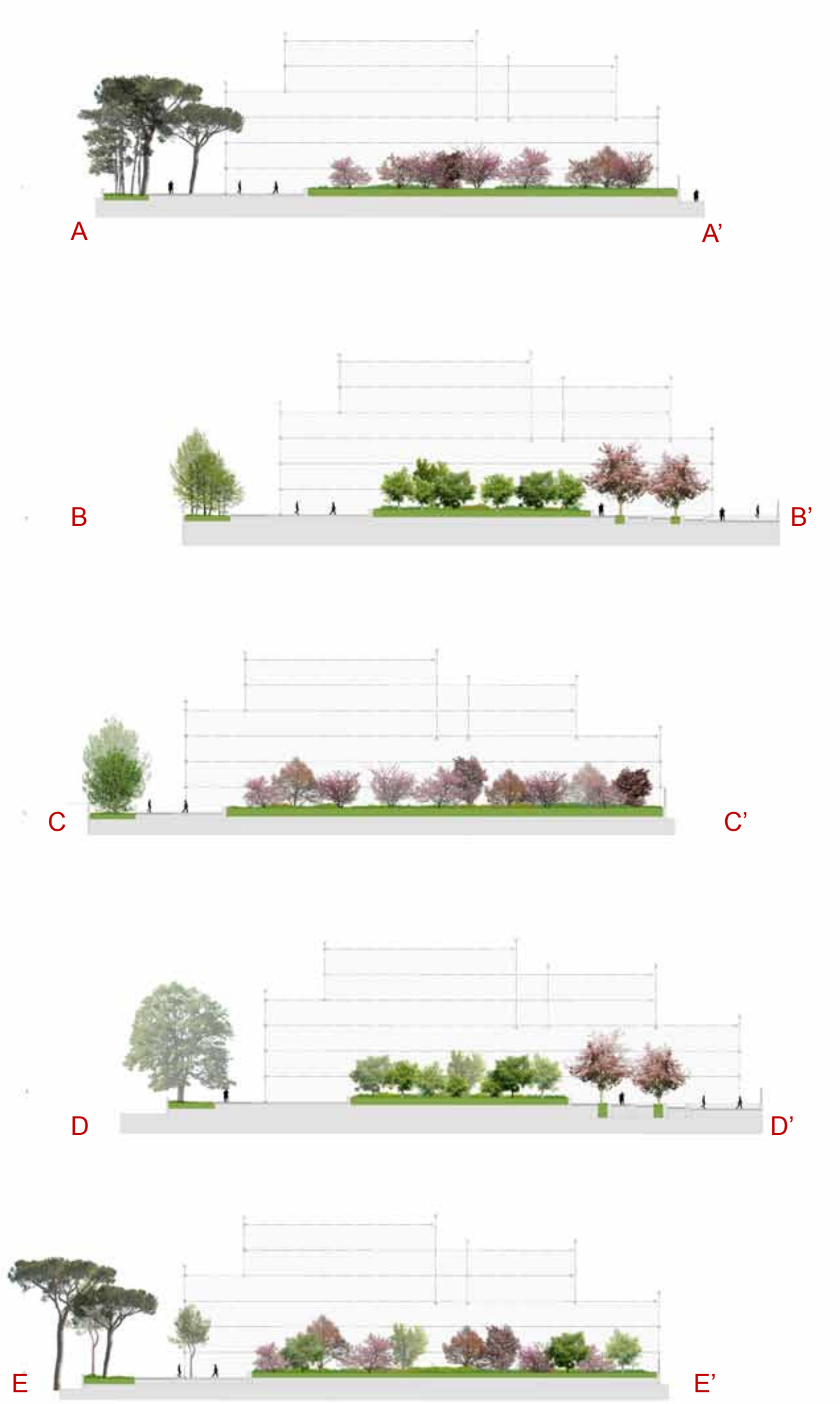


Entrée depuis la rue Marx Dormoy

Références

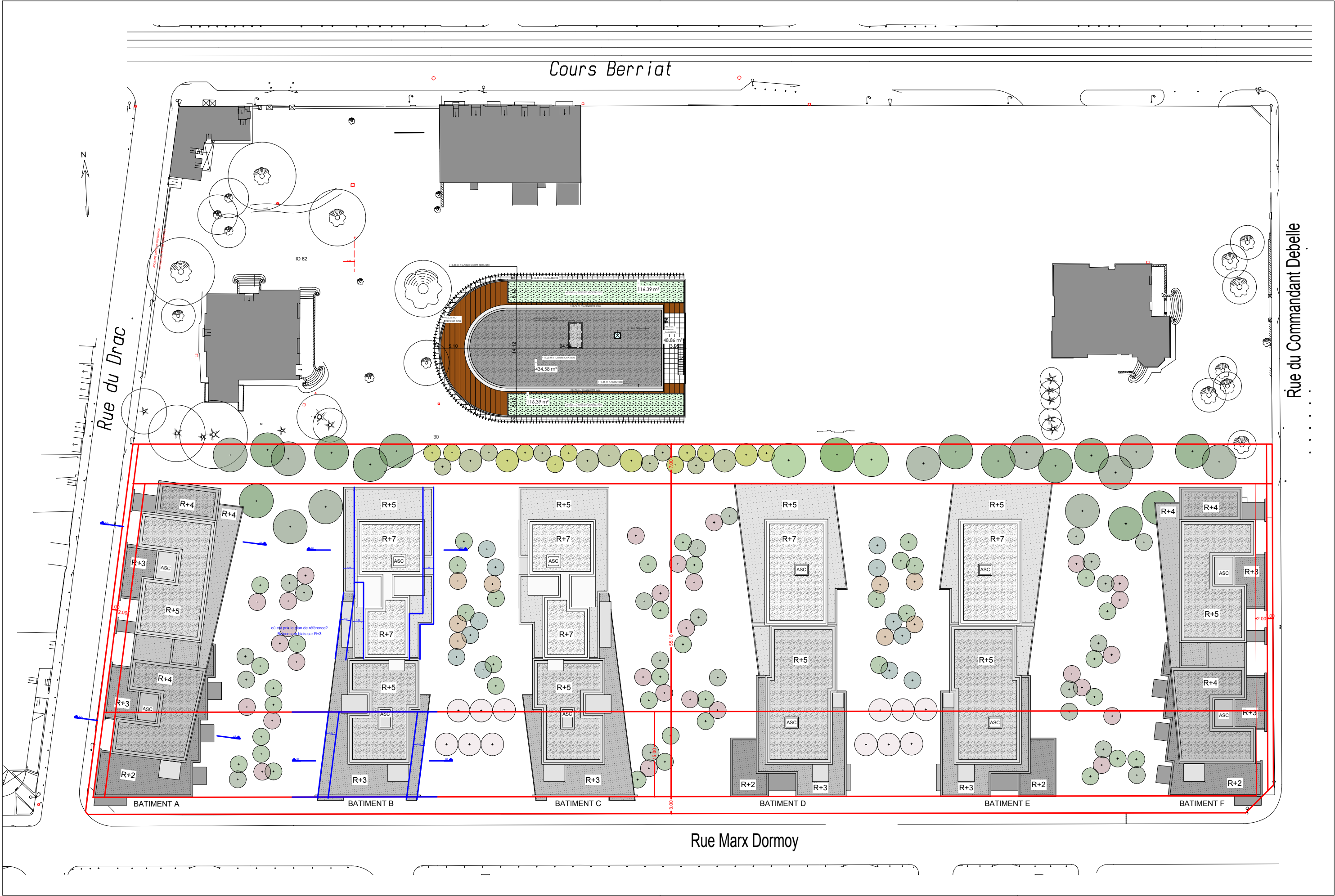


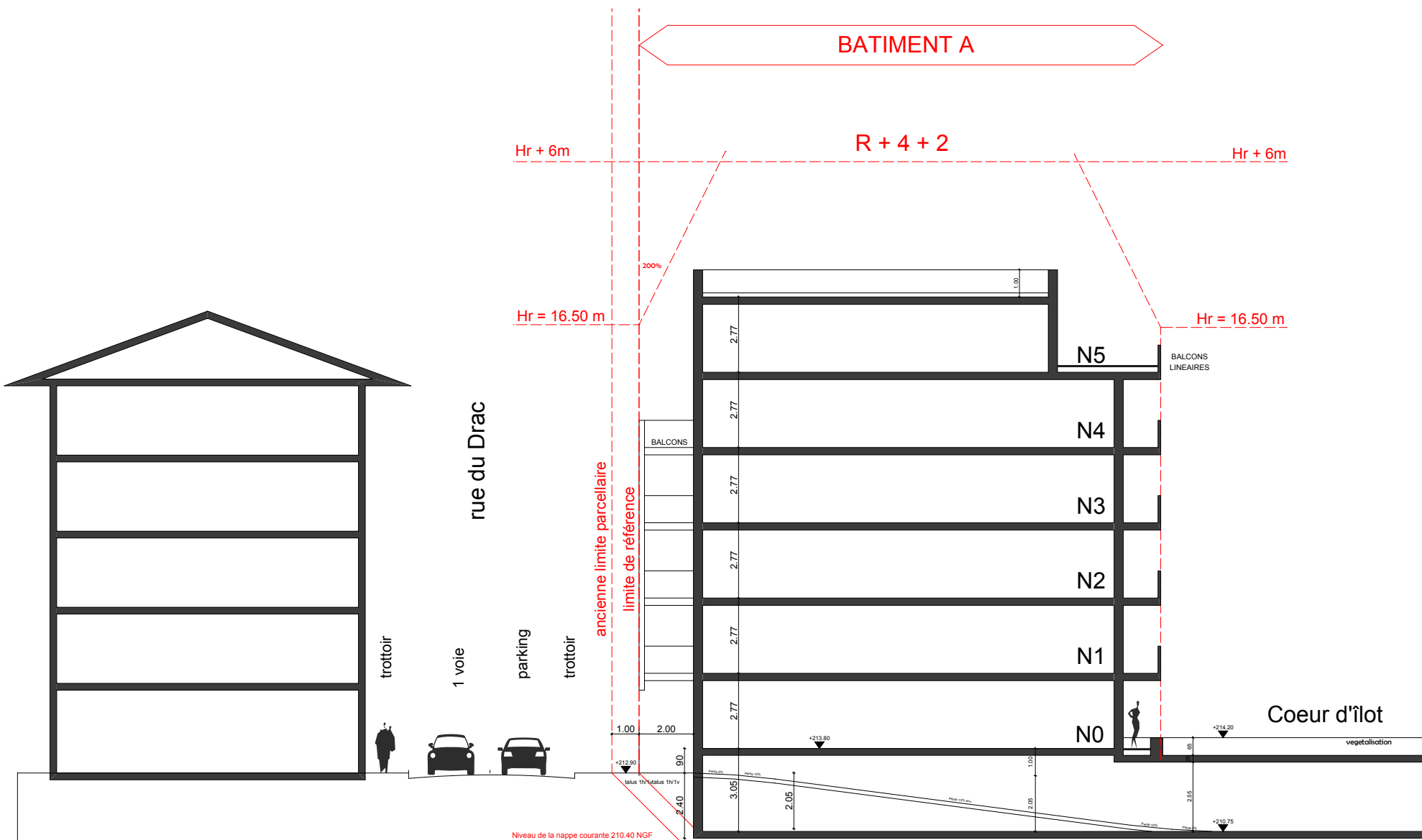
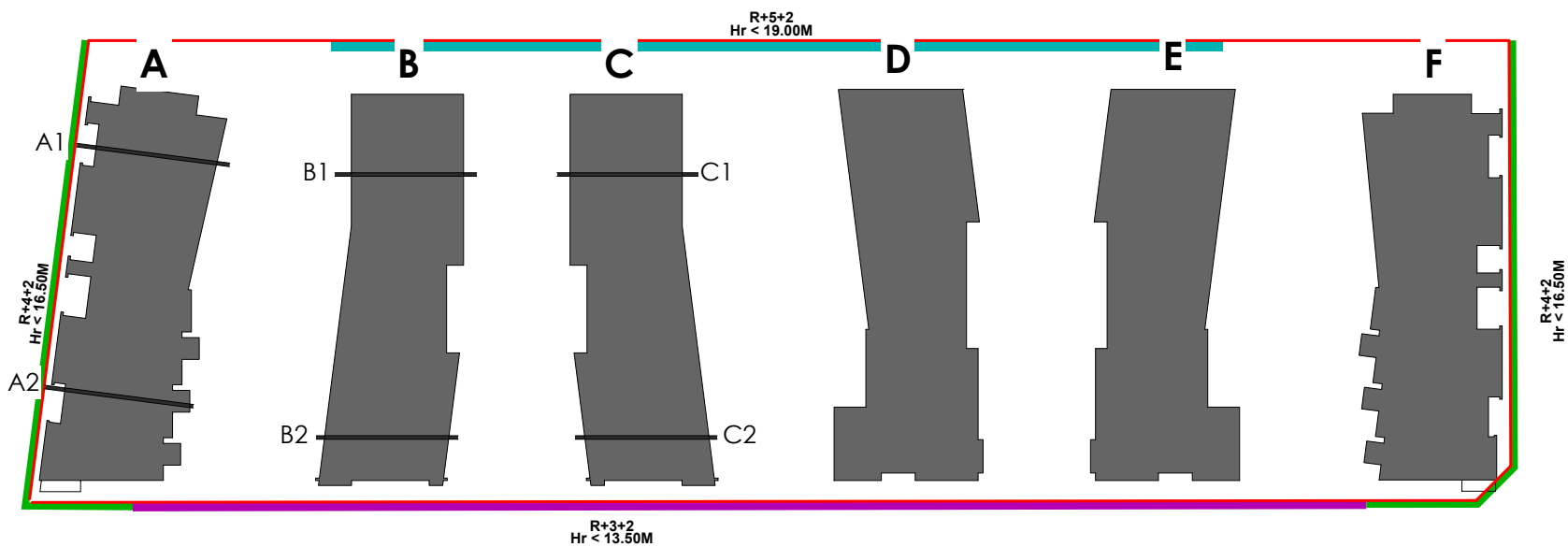
Coupes



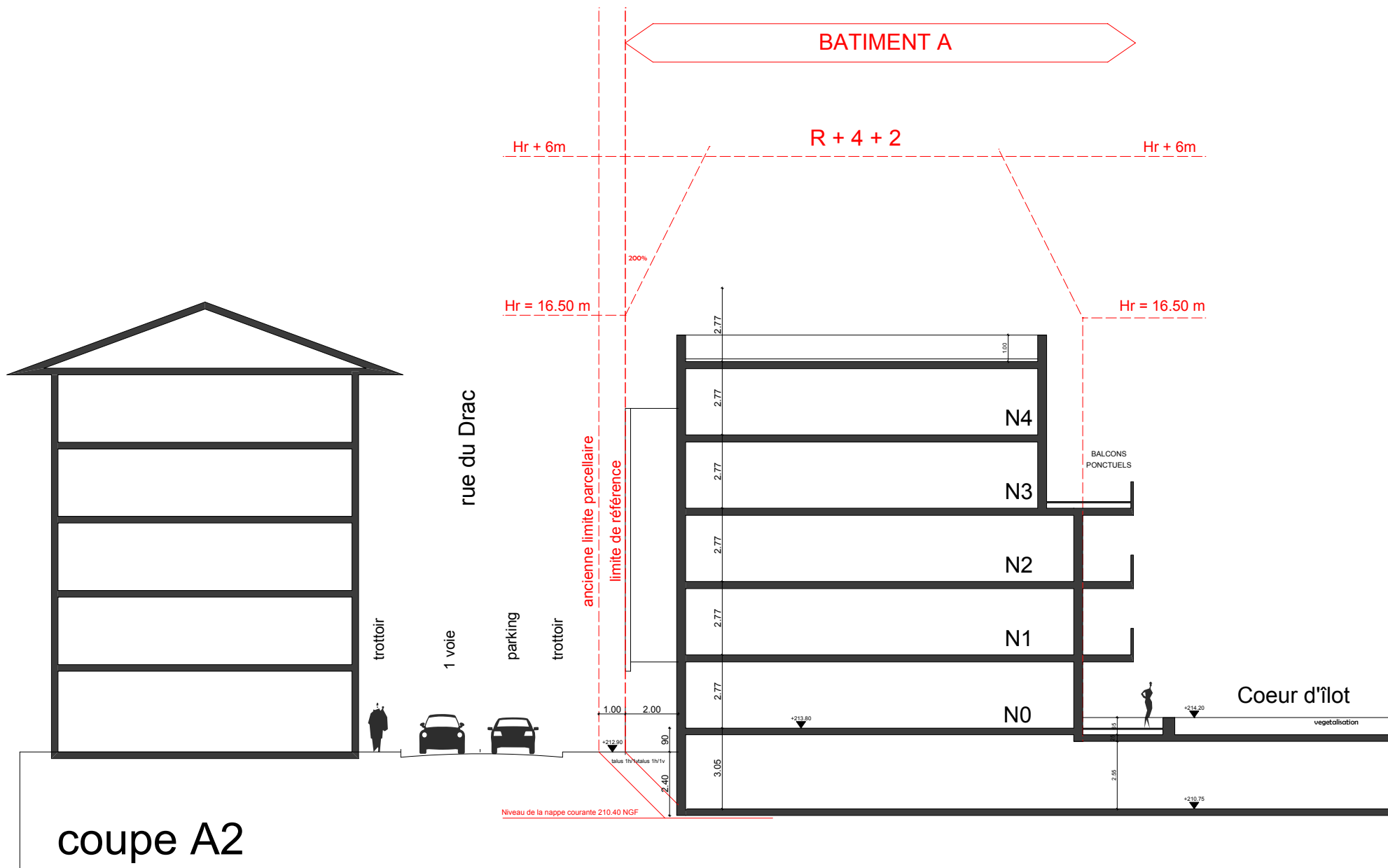
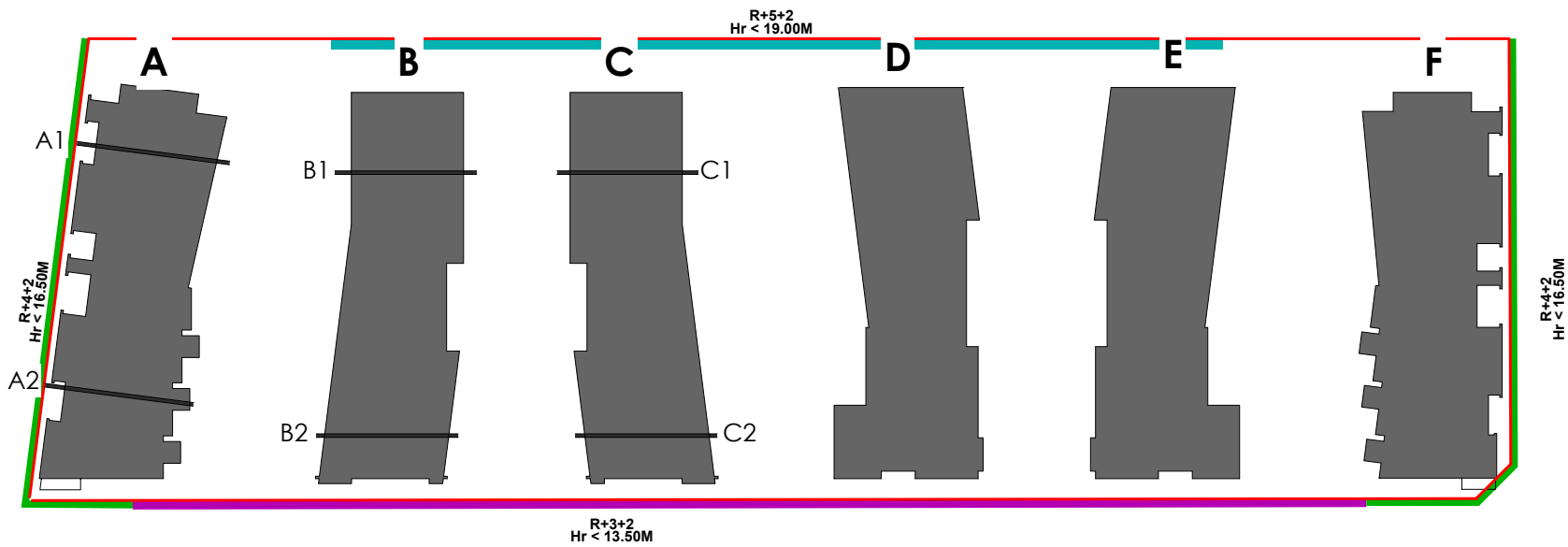
Elevation



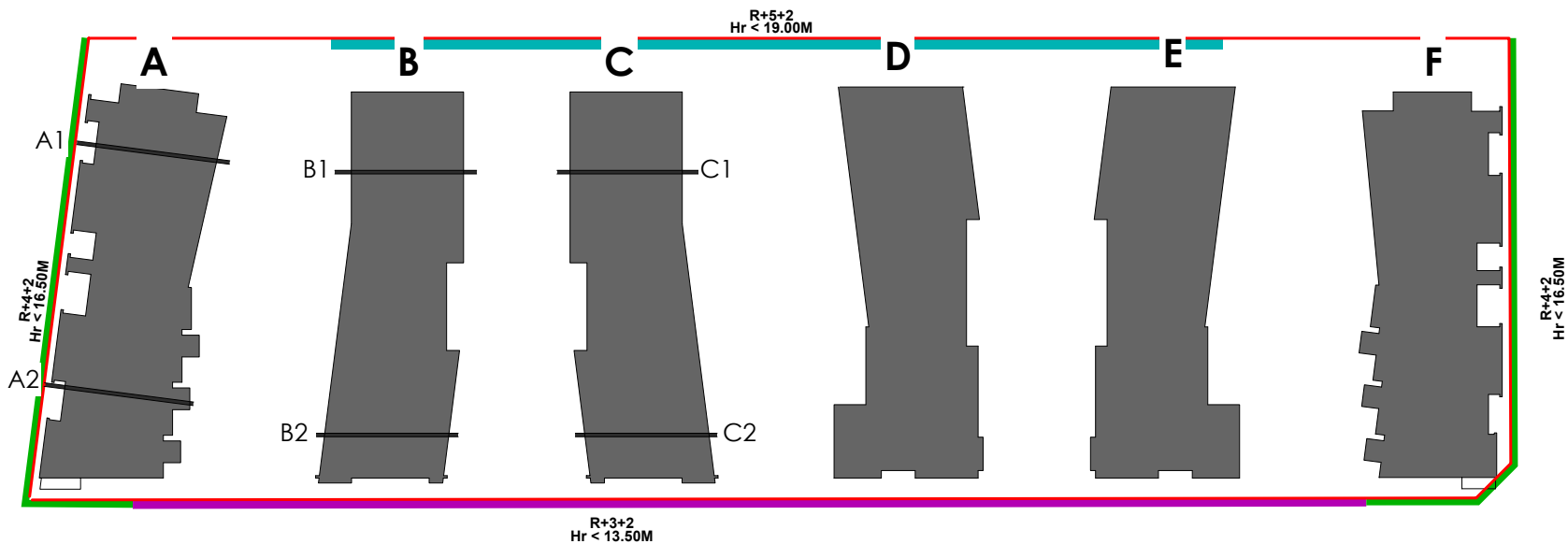




coupe A1

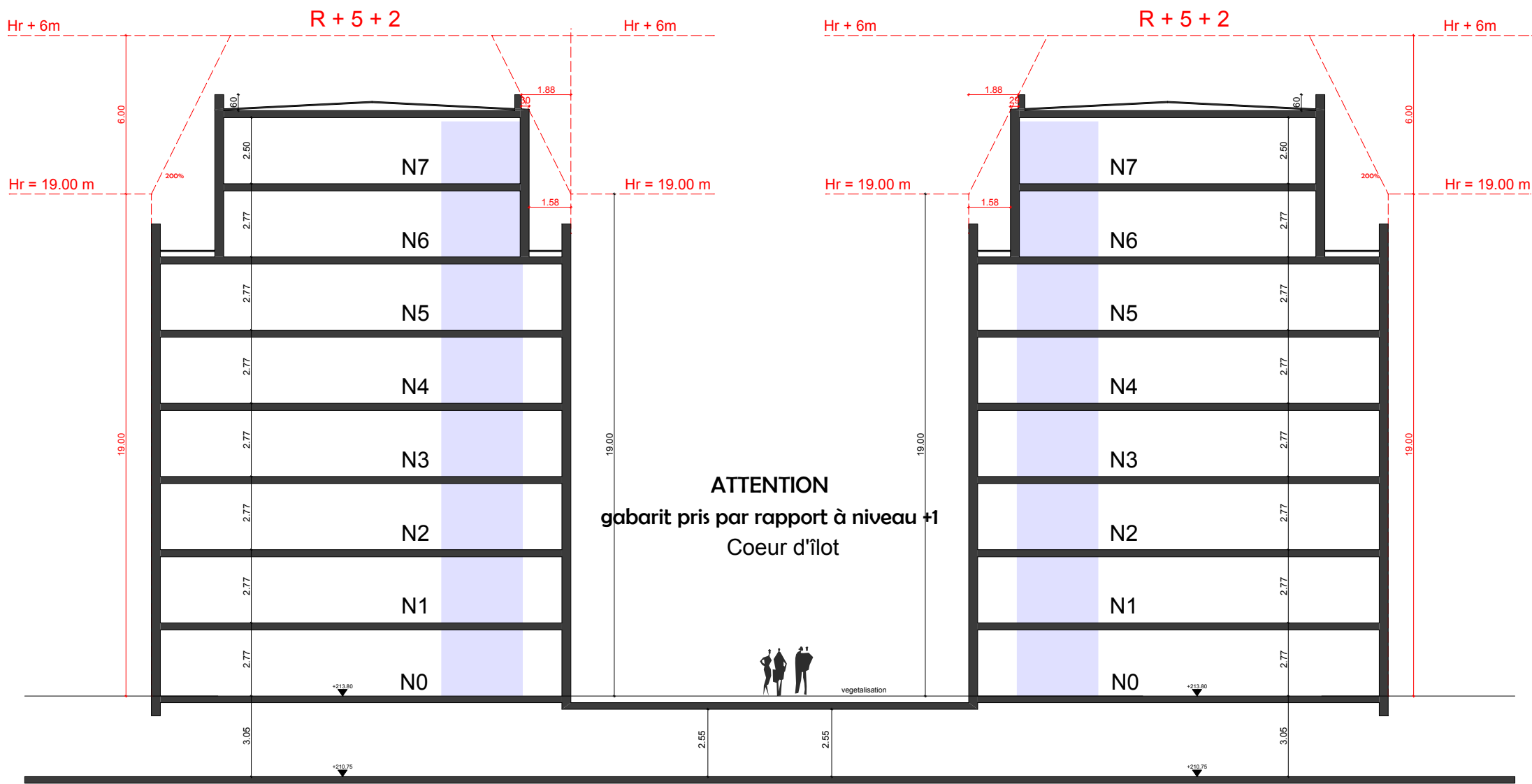


coupe A2

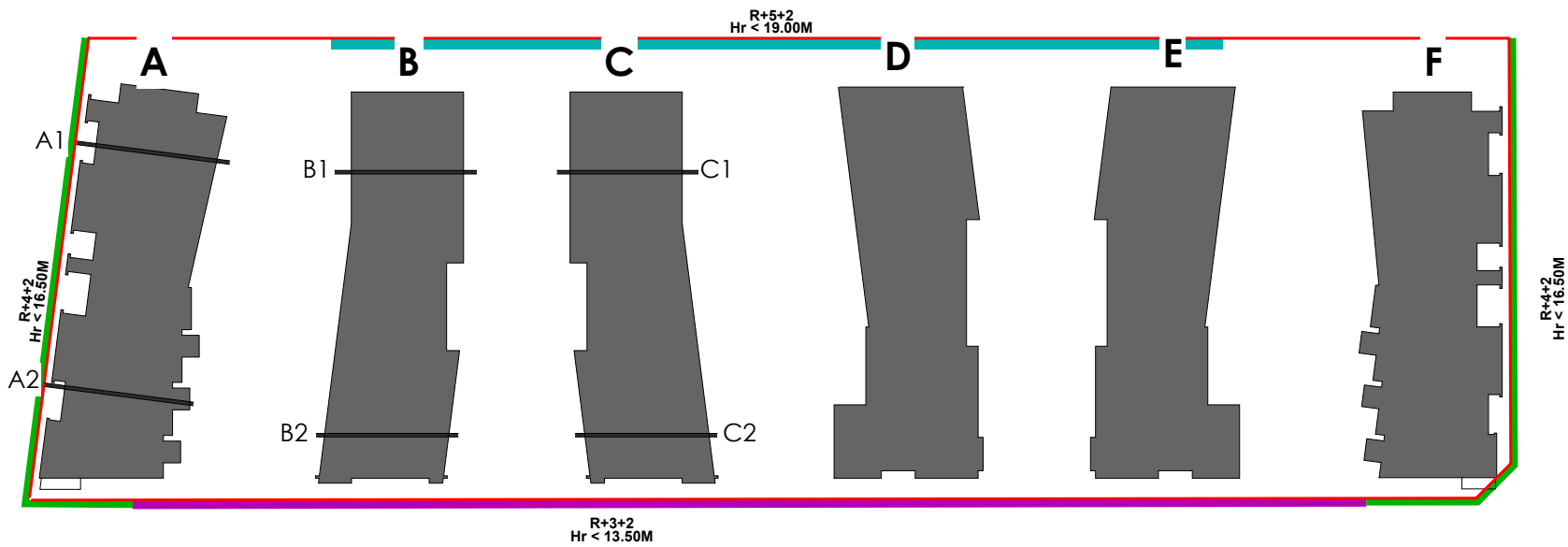


BATIMENT B

BATIMENT C

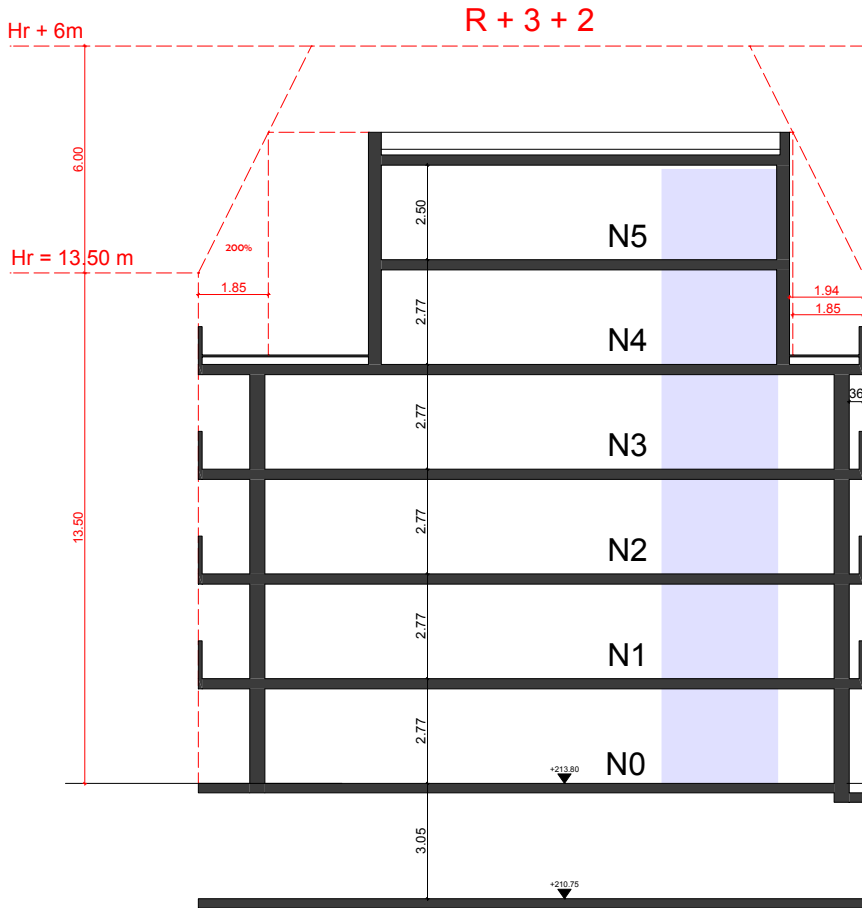


coupe B1 C1



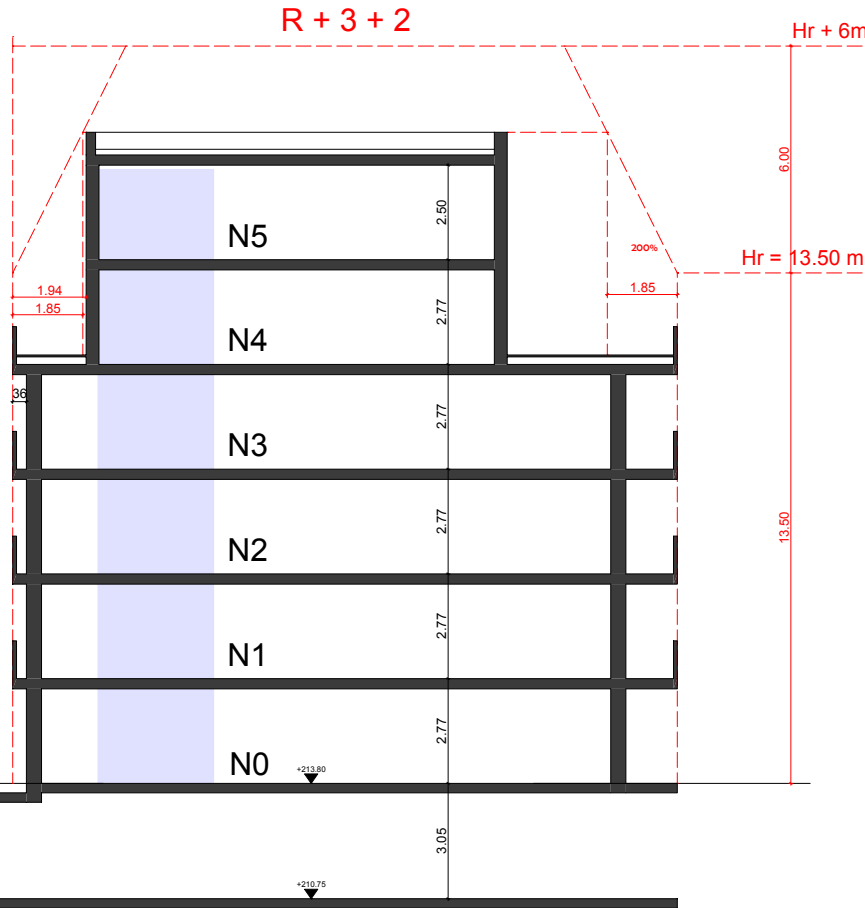
BATIMENT B

ATTENTION
gabarit pris par rapport à niveau fini
213.80 NGF



BATIMENT C

ATTENTION
gabarit pris par rapport à niveau fini
213.80 NGF



Coeur d'îlot



Perspective # A l'angle de la rue du Drac et la rue Marx Dormoy



Perspective # Le coeur d'îlot paysagé et les terrasses privées, rue Marx Dormoy



Perspective # les entrées, rue Marx Dormoy



Perspective # Vue du ciel

