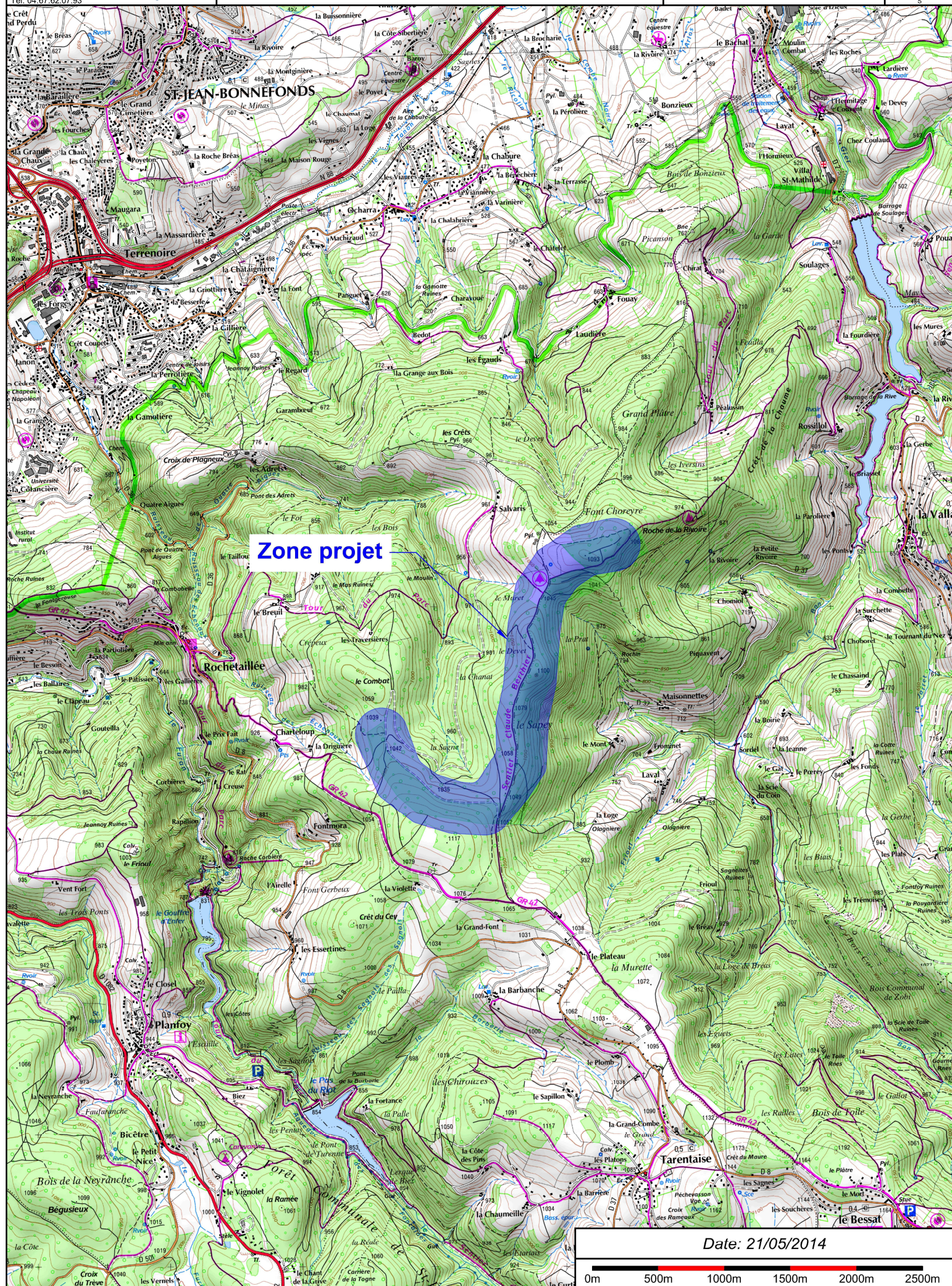
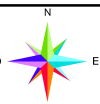


### **3. ANNEXE 2 : PLAN DE SITUATION DU PROJET**







**4. ANNEXE 3 : DEUX PHOTOGRAPHIES DATEES  
DE LA ZONE D'IMPLANTATION AVEC UNE  
LOCALISATION CARTOGRAPHIQUE DES PRISES  
DE VUE, L'UNE DEVANT PERMETTRE DE  
SITUER LE PROJET DANS SON  
ENVIRONNEMENT PROCHE ET L'AUTRE DE LA  
SITUER DANS LE PAYSAGE**

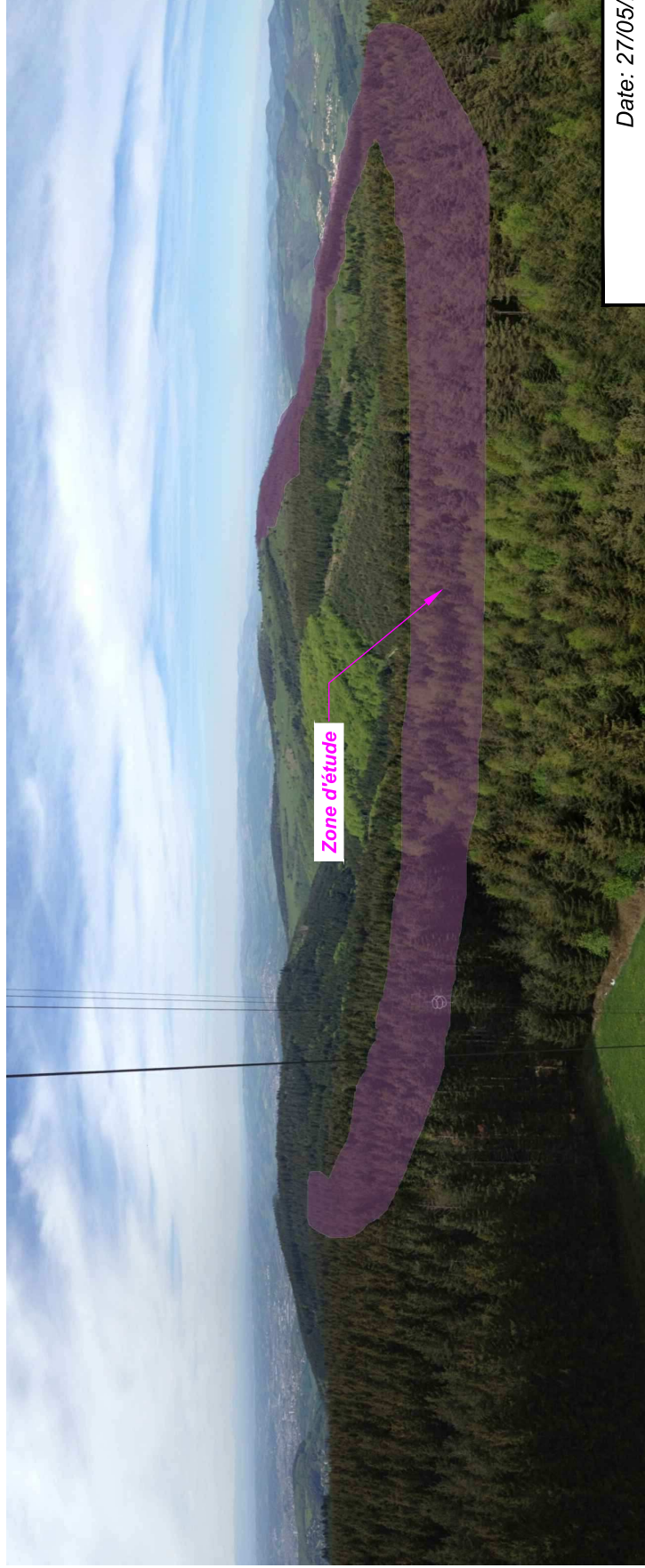
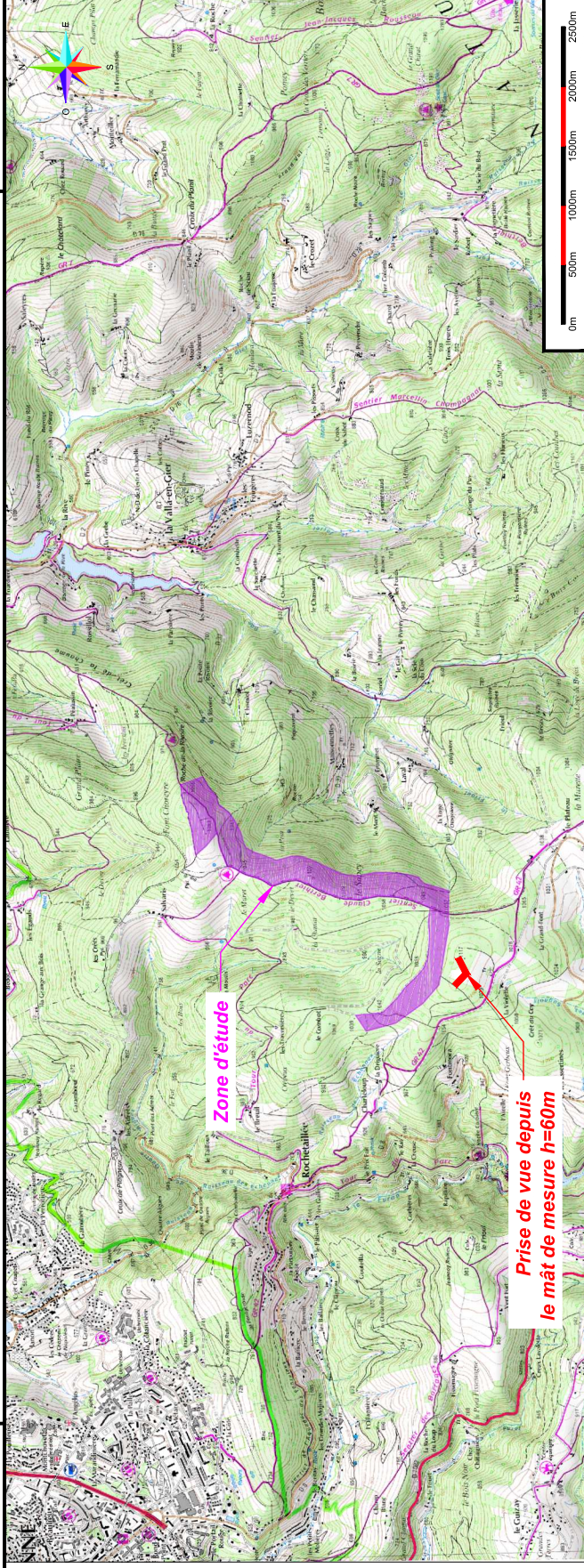
---

## PROJET EOLIEN DU PILAT STEPHANOIS

Saint-Etienne et La Valla-en-Gier

### ZONE D'ETUDE DANS SON ENVIRONNEMENT PROCHE

LOIRE (42)



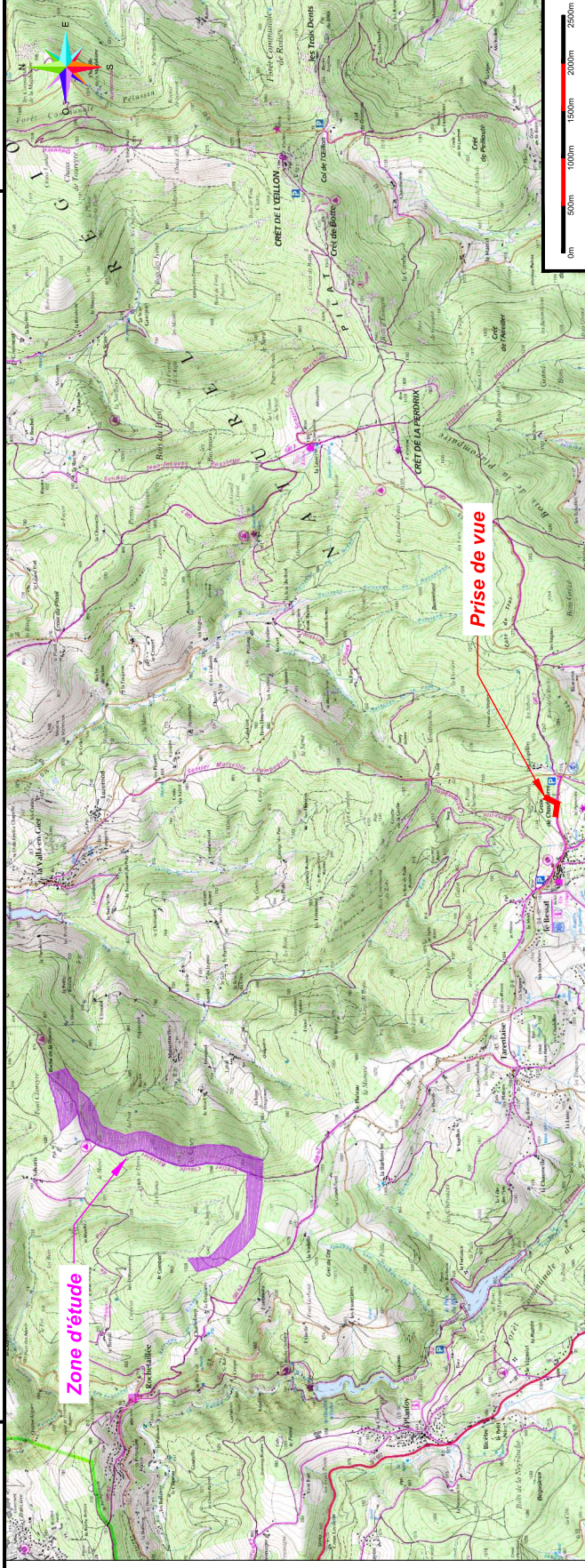


## PROJET EOLIEN DU PILAT STEPHANOIS

### ZONE D'ETUDE DANS LE PAYSAGE LOINTAIN

Saint-Etienne et La Valla-en-Gier

LOIRE (42)



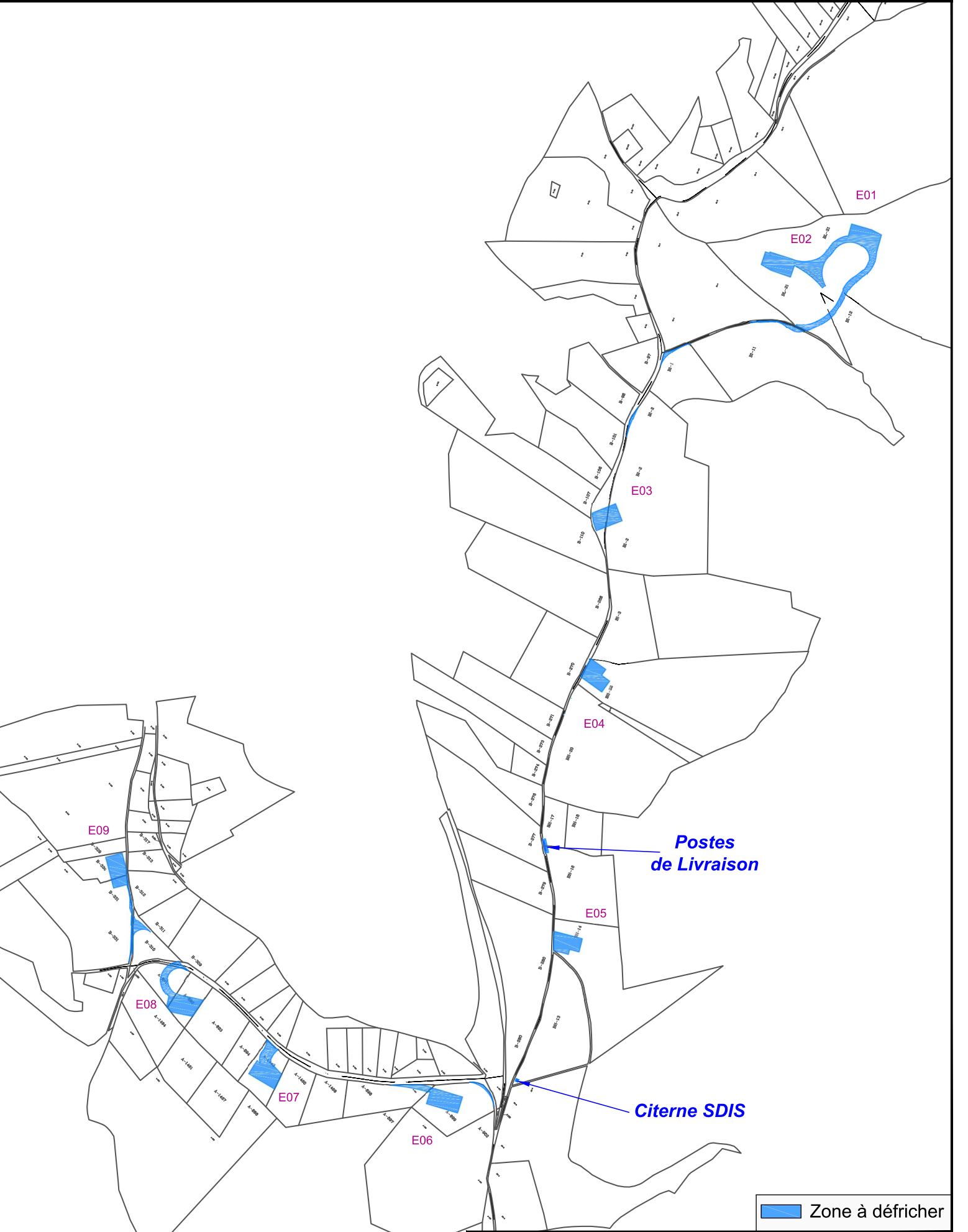
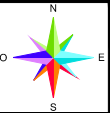
Date: 27/05/2014



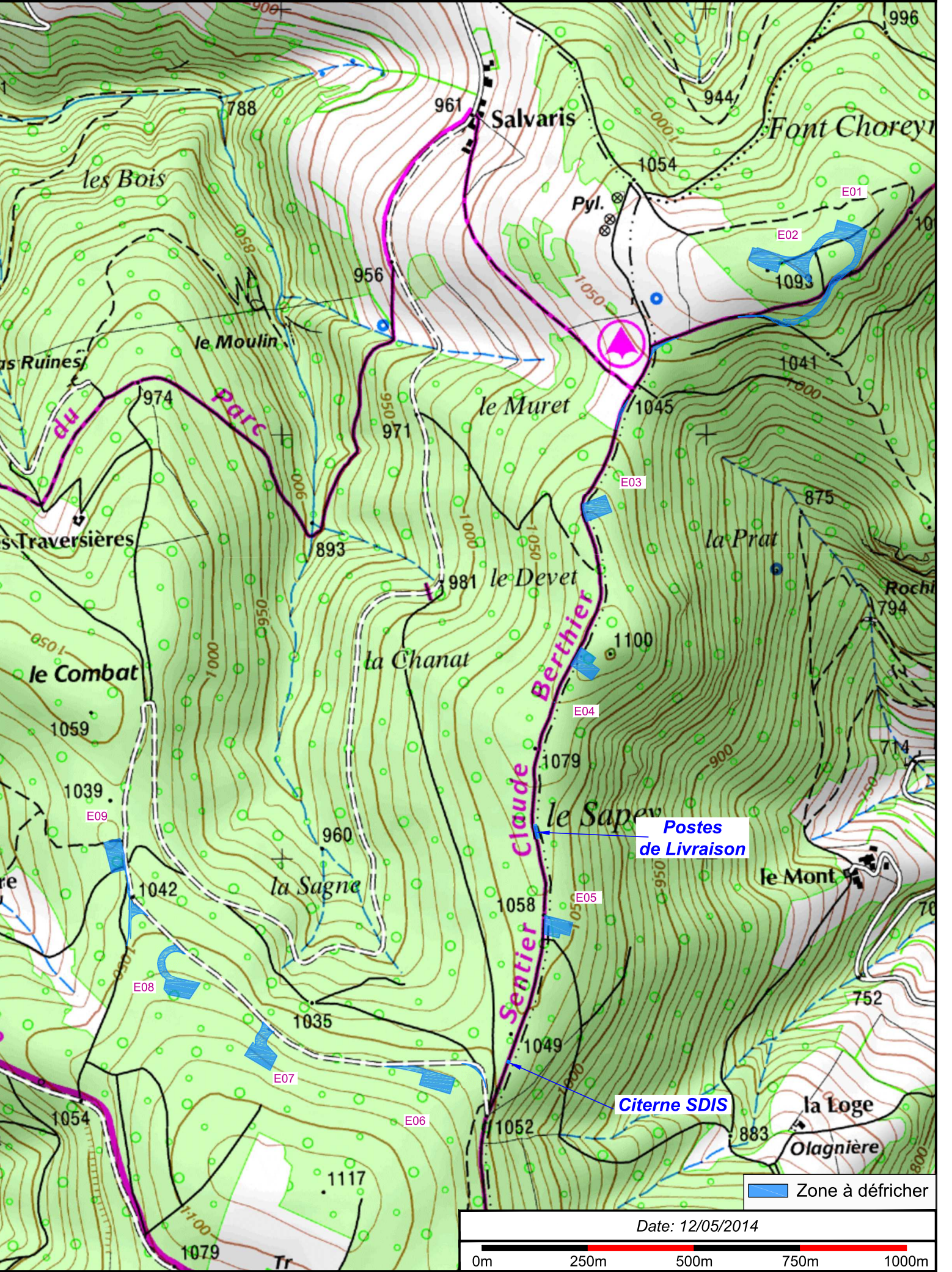
## **5. ANNEXE 4 : PLAN DU PROJET**

---

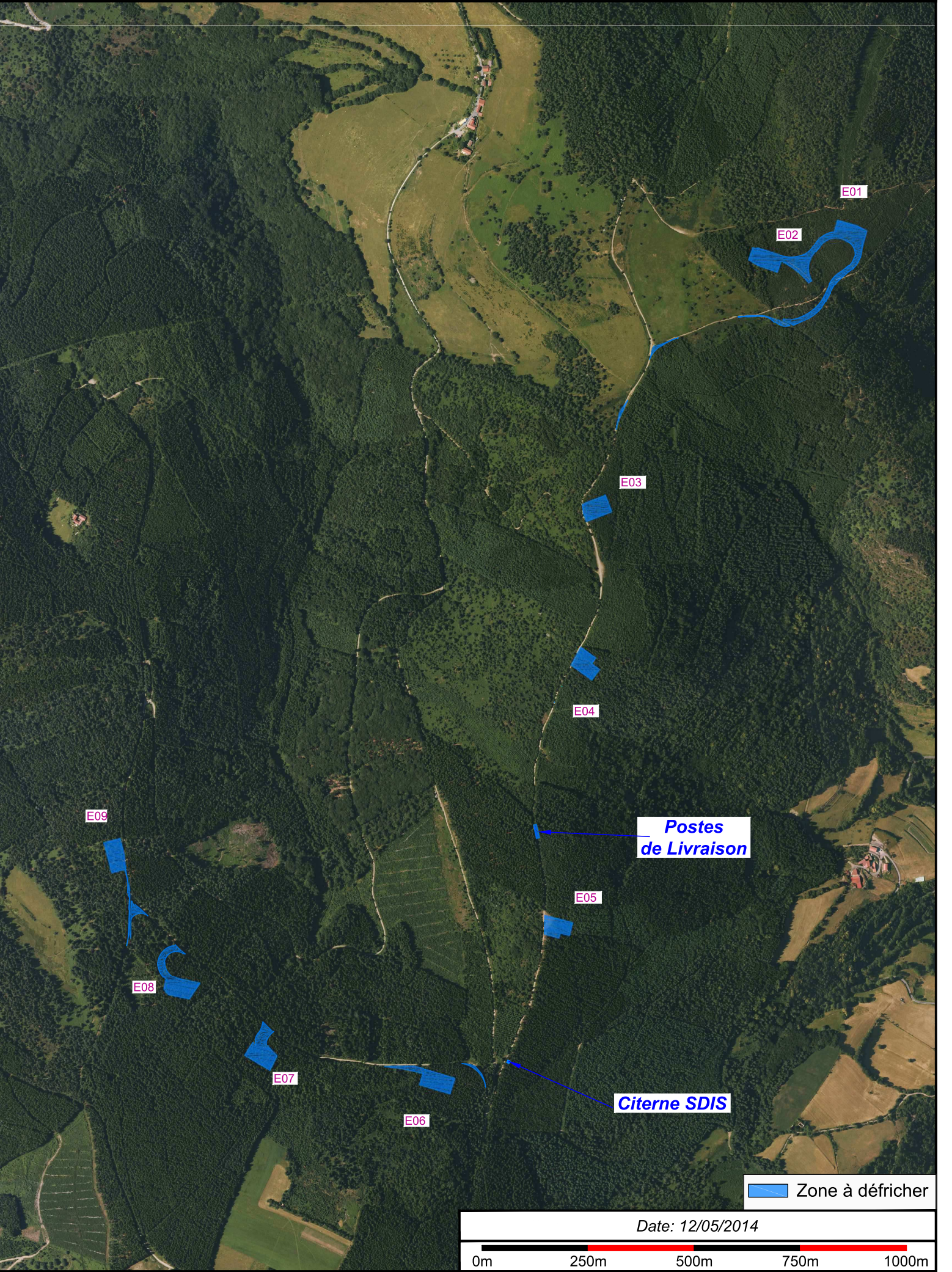
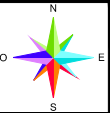










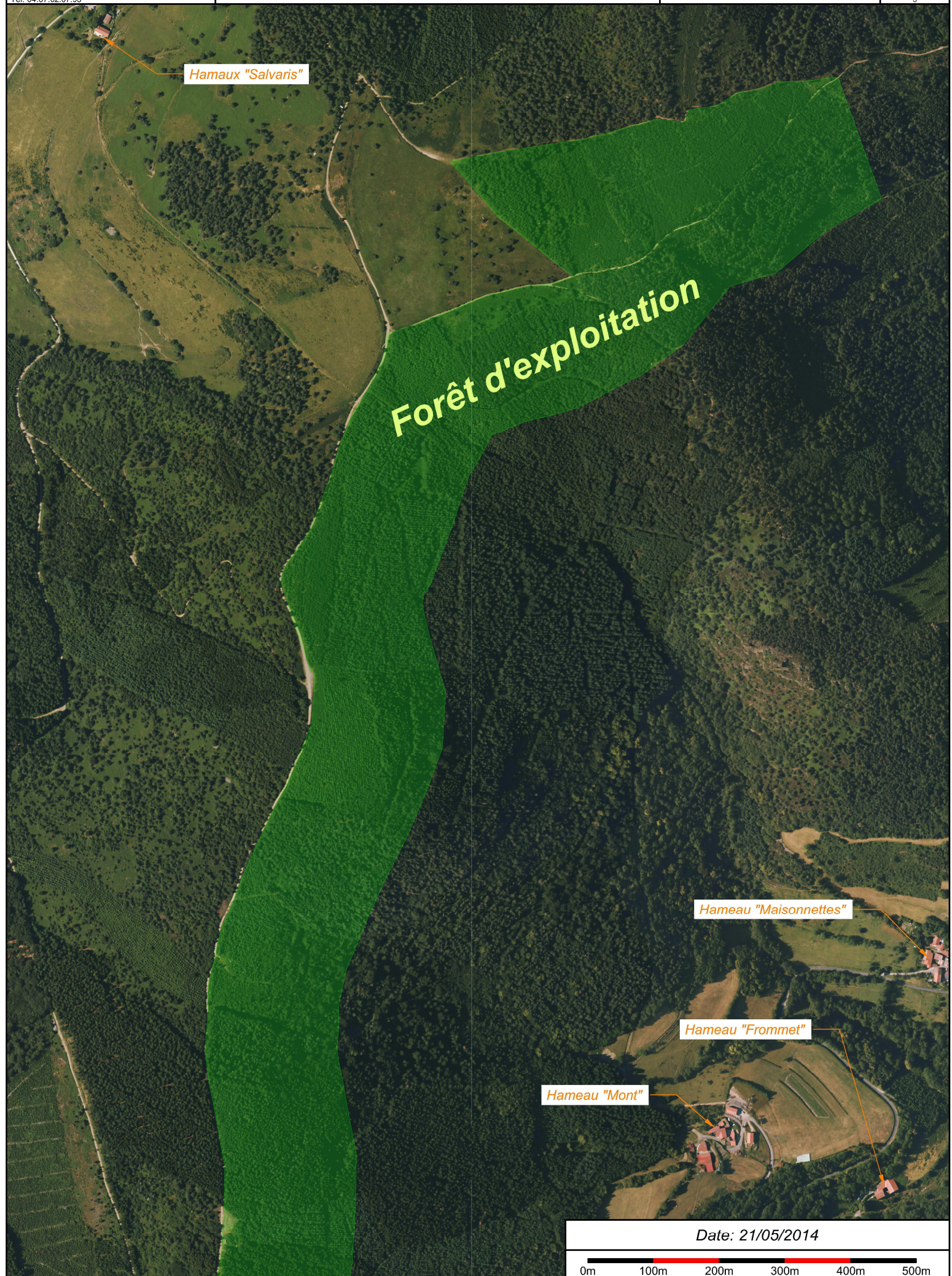
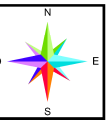




## **6. ANNEXE 5 : PLAN DES ABORDS DU PROJET (100 METRES AU MINIMUM)**

---





Hameaux "Maisonnnettes"

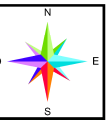
Hameaux "Frommet"

Hameaux "Mont"

Date: 21/05/2014

0m 100m 200m 300m 400m 500m





Hamaux "les Traversières"

**Forêt d'exploitation**

Hamaux "la Violette"

Date: 21/05/2014

0m 100m 200m 300m 400m 500m